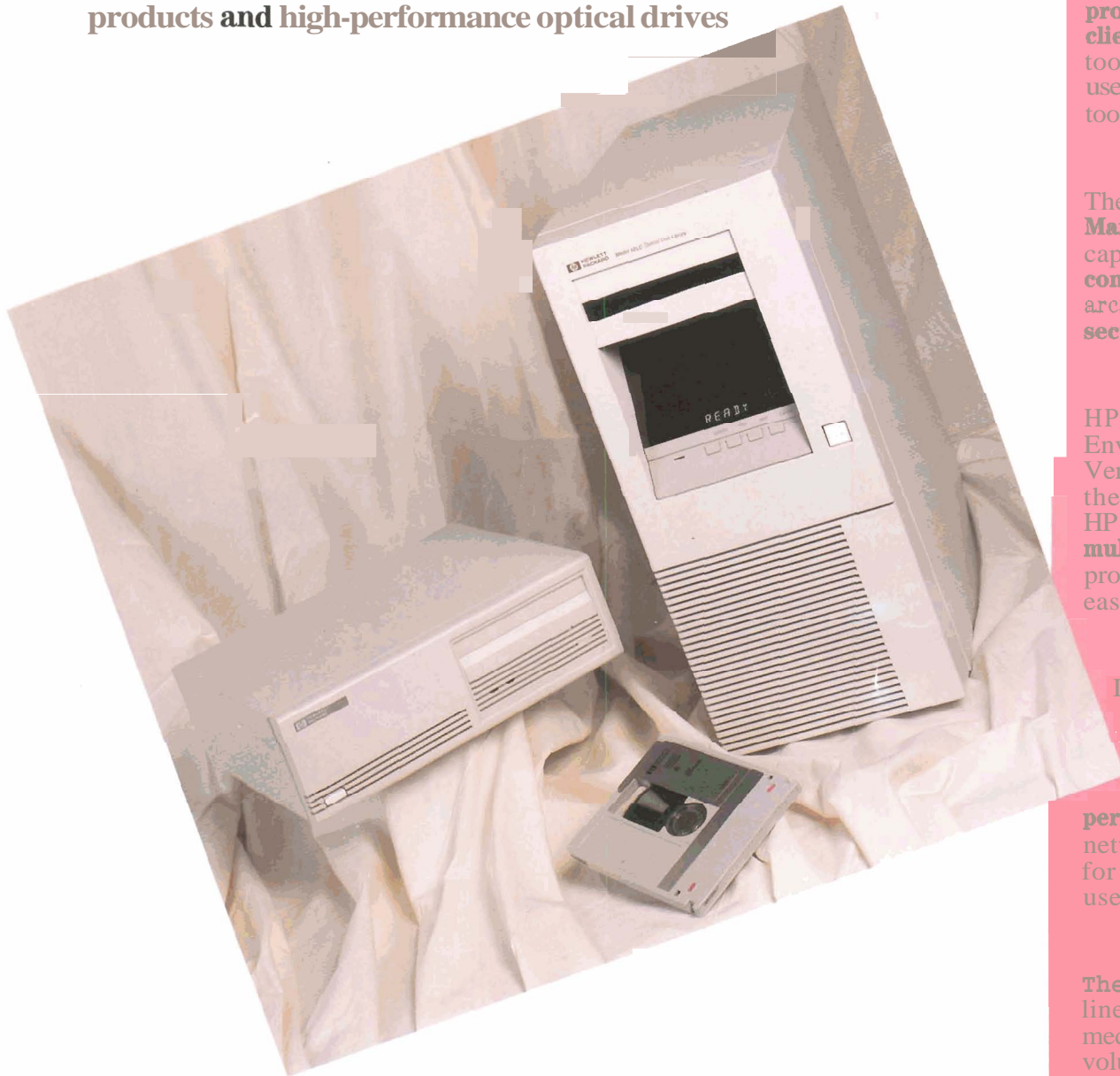


HP Computer Update

A Publication of Hewlett-Packard

October 1992

New HP Model 10LC optical library entry-level products and high-performance optical drives



HP SQL for IMAGE provides access to new **client/server** reporting tools featuring **GUI** for use with PC-based tools.

see page 10

The new HP Document **Manager** includes capabilities for version **control**, automatic archiving, and robust **security** control.

see page 13

HP Visual User Environment Version 3.0 enhances the competitiveness of HP **workstations** and **multiuser** systems by providing superior ease of use.

see page 17

Introducing the HP Vectra 486N PC series — affordable 486 **PCs** with excellent system **performance** and network capabilities for advanced office users on a LAN.

see page 25

The new HP 2300/840 line impact printer for medium- and high-volume printing and departmental **as** well as network environments was introduced at the recent INTEREX show.

see page 34

 **HEWLETT
PACKARD**

HP Computer Update

Vol. 2, No. 9

October 1992

HP Computer Update is a monthly publication of Hewlett-Packard Company that provides **information** on new Hewlett-Packard computer software and hardware products, **events**, and promotions.

Managing Editor: Tracy Wester

Address editorial correspondence and address corrections to:

HP Computer Update
P.O. Box 51827
Palo Alto, CA 94303-0724

Distribution information

HP Computer Update is distributed to individuals who are involved in **specifying** or **purchasing** HP computer **products** and systems. It is **also** sent to HP worldwide **value-added business partners**. If you would like to receive a copy, please contact your **local HP representative**.

Note: Not all HP computer products are sold and supported in all countries. Please check with your local HP sales office.

Hewlett-Packard does not warrant the accuracy of the information provided in HP Computer Update and shall not be liable for any use made of the information provided herein. Information provided in HP Computer Update is subject to change without notice.

To order HP software or hardware products, call your HP representative. A telephone listing for sales offices in the U.S. and Canada appears on the back cover.

To receive literature or technical information on HP computer systems and workstations, and to order workstations and select computer products, call HP DIRECT at **800-637-7740** (U.S. only).

To receive technical information about any HP product, call the Customer Information Center: **800-752-0900** in the U.S., or 800-387-3867 in Canada.

On the cover . . .

HP optical storage products offer new possibilities for removable disk and archival applications. The **low-end HP Model 10LC** library provides online storage for both workstation and entry-level multiuser systems. The new high-performance drive improves performance and reliability for the entire optical disk storage product family. See articles beginning on page **32**.



HP Computer Museum
www.hpmuseum.net

For research and education purposes only.



General News

- 4 "HP Standard Furniture obsolescence" correction
- 4 Events
 - RISCON retail technology conference
 - Mentor Graphics and HP present solution strategies seminars

Promotions

6

HP 3000 Systems

- 10 Announcing HP SQL for IMAGE
 - HP OpenMail clients of choice strategy
 - HP Corporate Business System price increase

HP 9000 Systems

- 12 New HP OmniBack release adds functionality
 - New HP Document Manager
 - Introducing HP GlancePlus Pak/UX for HP 9000 systems
 - HP LaserRX/UX enhancements and repricing
 - DAT data compression support on Series 800
 - Uninterruptible power supplies for standalone HP systems only
 - Option 800 for HP Series 6400 Model 2000DC discontinued
 - HP SRM discontinued

Workstations

- 17 HP Visual User Environment Version 3.0
 - HP ScanJet IIc scanner for Series 700 workstations

New HP Series 6000 SCSI mass storage systems

HP EGS/UX patch required for Model 425e/EVRX

New country-specific PC-style keyboards

Localized software versions for workstations

HP SharedPrint/UX for Series 700 workstations

HP-UX 9.0 products increase performance and ease of use

HP-UX 9.0 FORTRAN products ordering changes

HP Apollo 9000 Series 400 discontinuance

Domain DN Series discontinuance update

HP 1000 Systems

- 24 New A-Series integrated peripheral tray
 - HP 1000 cabinet and racking hardware price changes
 - Updated ordering instructions for HP 1000 SCSI interface

Personal Computers

- 25 Introducing HP Vectra 486N PC series
 - HP introduces Token Ring solutions for HP Vectra PCs
 - New HP Vectra 486/33ST and 486/66ST PCs to replace HP Vectra 486/33T PC

Networks

- 28 New HP Model 45 Plus
 - New HP EtherTwist Hub provides easy upgrade path
 - HP NetLS on HP-UX 7.0 discontinuance

Peripherals

31 General

Refurbished HP disk drives, tape drives, and upgrades price reduction

Limited supply of refurbished peripherals

Localized language products for printers, PCs, and terminals

Two-button mouse discontinuance

32 Mass Storage

New HP high-performance optical drive

New HP Model 10LC optical library

New HP optical disk 30-year warranty

34 Printers

Introducing HP 2300/840L line printer

Introducing HP Asian laser printer

High-end HP Asian system line printer

HP LaserJet printer bitmapped soft fonts discontinuance

New environmental packaging for HP LaserJet printer-type products

HP LaserJet printer SIMM memory price reduction

Fraudulent toner activity

38 Terminals

New software adds local user environment to HP Xstations

"HP Standard Furniture obsolescence" correction

The article in the September *HP Computer Update* contained

two incorrect replacement part numbers.

Description	Product No.	
	Original	Correct Replacement
Workstation table, right keyboard	92210C	92213F
Workstation table, left keyboard	922100	92213F

Events

RISCON retail technology conference

Hewlett-Packard's Retail Industry Marketing Group will be at the annual National Retail Federation's technology show Retail Information System Conference (RISCON), at the New Orleans, Louisiana, Superdome October 18–21. RISCON is a premier retail technology event with more than 10,000 retailers attending. The target audience for RISCON is chief information officers and management information systems directors of retailers in the department, discount, mass merchandiser, and large-format hardgoods and softgoods specialty store segments.

The HP booth will highlight HP's Retail Enterprise portfolio with seven OpenSTORE solutions demonstrating applications on HP's UNM systems. The booth demos will include Informix/Symbol Technology's Wireless Store of the Future; IBM's time and attendance solution; Techpoint's point-of-sale solution; Time Corp's labor management solution; Answer Computer's help desk productivity tool on HP X-terminals; and Alpha and Omega's distribution center solution. HP OpenView will also be in the booth. Richter Management System will be demonstrating a complete HP-UX solution in its booth.

Related events include two consultant breakfasts cohosted with Richter Management Systems, a conference workshop on open systems with three key HP retail customers, and an evening event for customers and HP Channel Partners.

Mentor Graphics and HP present solution strategies seminars

For U.S. and Canada only

Mentor Graphics and HP are sponsoring a series of seven seminars in twenty-one cities in the U.S. and Canada. The seminar series focuses on the EDA market and helping potential customers overcome difficult design issues such as delivering lower costs and higher quality while increasing design complexity and delivering products in a shorter time.

Listed below are the topics, locations, and dates for each seminar. Not all seminars are scheduled for all cities. For more information on these seminars or registration information, please call 800-547-3002 toll free in the U.S. and Canada. Or call 503-685-8000.

Seminar topics and dates

- *Multichip modules* — improve packaging density and system performance
 - Atlanta, Georgia — November 16
 - Dallas, Texas — November 9
 - Detroit, Michigan — November 19
 - Halifax, Nova Scotia — November 12
 - Indianapolis, Indiana — November 17

- Los Angeles, California — November 5
- Minneapolis, Minnesota — November 20
- Montreal, Quebec — November 10
- Paramus, New Jersey — November 13
- San Diego, California — November 4
- San Jose, California — November 3
- Schaumburg, Illinois — November 18
- Waltham, Massachusetts — November 11
- *High-speed PCB design* — sharpen high-performance design skills
 - Atlanta, Georgia — November 5
 - Dallas, Texas — November 13
 - Los Angeles, California — November 20
 - Minneapolis, Minnesota — November 10
 - Montreal, Quebec — November 3
 - Paramus, New Jersey — November 6
 - San Diego, California — November 19
 - San Jose, California — November 17
 - Schaumburg, Illinois — November 11, 12
 - Waltham, Massachusetts — November 4
- *Advanced IC design* — span the gap from language to layout
 - Denver, Colorado — November 11
 - Indianapolis, Indiana — November 18
 - Irvine, California — November 12
 - Los Angeles, California — November 13
 - Minneapolis, Minnesota — November 17
 - Paramus, New Jersey — November 20
 - Portland, Oregon — November 4
 - San Jose, California — November 10
 - Waltham, Massachusetts — November 19
- *EDA library management* — gain speed, quality, and cost reduction with library management
 - No classes in October or November ■
- *Board and system-level simulation* — achieve success with board and system-level simulations
 - Atlanta, Georgia — October 20 ■
 - Dallas, Texas — October 27 ■
 - Detroit, Michigan — October 21 ■
 - Fishkill, New York — October 12
 - Montreal, Quebec — October 13
 - Ottawa, Ontario — October 14
 - Paramus, New Jersey — October 16
 - Schaumburg, Illinois — October 22
 - Waltham, Massachusetts — October 15
- *Domain to HP-UX migration* — master steps to successful migration
 - Detroit, Michigan — October 15
 - Minneapolis, Minnesota — October 13
 - Schaumburg, Illinois — October 14
- *Digital signal processing design* — explore tools and implementation paths
 - No classes in October or November

The promotions listed in *HP Computer Update* contain brief information about HP promotions currently in effect — including new promotions, promotions with changes (underlined), and promotions that are ending.

For more details on any of the following promotions, contact your HP representative.

Special considerations may apply to some of these promotions, and discount percentages can vary by country. Note: promotional programs listed with a "Worldwide" scope may not be available in all countries. Check with your HP representative for local availability.

Hewlett-Packard assumes no responsibility for any errors that might appear in these listings.

HP 3000 Systems

HP 3000 *end change* Series 6X/70 Installed Base Upgrade

If you own an HP 3000 Series 64, 68, and 70 and are upgrading to the Series 937/LX, 947/LX, 957/LX, 967/LX, 977, 987, 990, or 992, you can receive 10% off the SPU, integrated peripherals, DTC and associated ports, rack cabinets (P/N A1883A/84A), and associated options, as well as 15% off selected software products.

- **Scope:** U.S., Canada, and Europe (*check with your HP representative for local availability*)
- **Eligible products:** P/Ns A1707A/08A/09A/10A/52A/57A/58A/72A, A2300A/17A
- **Start date:** June 1, 1992
- **End date:** October 31, 1992
- **Promotion number:** 2.641

HP 3000 *end change* Series 925/LX, 935, 950 Installed Base Upgrade

If you own an HP 3000 Series 925/LX, 935, 950 and are upgrading to the HP 3000 Series 937/LX, 947/LX, 955, 957/LX, 967/LX, 977, 987, 990, or 992, you can receive 10% off the SPU, integrated peripherals, DTC and associated ports, rack cabinets (P/N A1883A/84A), and associated options, as well as 15% off selected software products.

- **Scope:** U.S., Canada, and Europe (*check with your HP representative for local availability*)
- **Eligible products:** P/Ns A1707A/08A/09A/10A/52A/57A/58A/72A, A2300A/17A
- **Start date:** June 1, 1992
- **End date:** October 31, 1992
- **Promotion number:** 2.642

Workstations

HP GancePlus UX Trial Software Kit Discount

If you purchase an HP GancePlus UX license within 90 days of purchasing an HP GancePlus UX trial software kit, you can receive a promotional discount off the price of the software license.

- **Scope:** For North America only
- **Eligible products:** P/Ns B1790A, B2660A, B1791A, B2661A, B1807A, B2804A
- **Start date:** April 1, 1992
- **End date:** December 31, 1992
- **Promotion number:** 2.626

HP Design Plus *end* Workstation Furniture promotion

If you purchase a quantity of three, of any combination of eligible products, you will receive a task chair at no additional charge.

- **Scope:** For North America only
- **Eligible products:** P/Ns 92213B/F and 92214K (workstation tables), 92214A/B/C (system tables), 92211N/R (cabinets)
- **Start date:** May 1, 1992
- **End date:** October 31, 1992
- **Promotion number:** 2.630

Buy a Model 720/730 *end* and X Station — Receive Memory Discount

If you order an HP Apollo 9000 Model 720 (P/N A1933A) or a Model 730 (P/N A1950B) server with 64 MB of RAM and at least one X Station configuration (on the same order), you can receive a promotional discount on 32 MB of the 64 MB of memory ordered. If you order HP mechanical engineering or data management software, you will receive a 10% discount off the list price of that software.

- Also, if you order SoftBench (P/N B2600A), you can receive a 10% discount per license ordered.
- **Scope:** For North America, Mexico, and Latin America only (*check with your HP representative for local availability*)
 - **Eligible products:** P/Ns A1933A, A1950B, B2600A, C2705A
 - **Start date:** June 1, 1992
 - **End date:** October 31, 1992
 - **Promotion number:** 2.645

Software Transfer Program

If you are moving from an HP 9000 Series 3001400 HP-UX platform to an HP Apollo 9000 Series 700 PA-RISC platform, you are eligible to transfer software licenses and receive the discounts on the Series 700 products.

- **Scope:** Worldwide (*check with your HP representative for local availability*)
- **Eligible products:** Check with your HP representative
- **Start date:** June 1, 1992
- **End date:** November 30, 1992
- **Promotion number:** 2.648

3D Aggressor — Model 720CRX

You can purchase the HP Apollo 9000 Model 720CRX-24Z for the promotional price of approximately \$25,500. Also, you can purchase the Model 720CRX-24 at the promotional price of approximately \$24,000.

- **Scope:** Worldwide (*check with your HP representative for local availability*)
- **Eligible products:** P/Ns A2263A/64A
- **Start date:** September 1, 1992
- **End date:** December 31, 1992
- **Promotion number:** 2.670

Domain "Welcome Back to Support"

If you are currently unsupported and sign up for a minimum of one year of ApolloLine Support or one year of Domain/OS Software Only Support, you can receive a 50% promotional discount on any Basic Software Update required to bring your system up to date.

- **Scope:** Worldwide (*check with your HP representative for local availability*)
- **Eligible products:** Check with your HP representative
- **Start date:** September 1, 1992
- **End date:** February 28, 1993
- **Promotion number:** 2.672

ME Series Multi-Seat 700/X *end*

If you participate in the Multi-Seat sales promotion (2.645) which provides a discount on the hardware, you can also take advantage of this promotion which provides a 10% promotional discount off the list price of MDD software (purchased in conjunction with the hardware promotion, 2.645).

- **Scope:** North America
- **Eligible products:** Check with your HP representative
- **Start date:** September 1, 1992
- **End date:** October 31, 1992
- **Promotion number:** 2.676

Networks

Enhanced Competitiveness — DTC16 Solution

If you purchase an HP 9000 Series 800 or 900 Series HP 3000 system with one or several HP DTC16s (data communications and terminal controller), you are eligible for a promotional discount on the DTCs. The DTCs must be fully loaded (two asynchronous options providing 12, 14, or 16 ports per DTC16, depending on the option combination).

- **Scope:** Worldwide (*check with your HP representative for local availability*)
- **Eligible products:** Check with your HP representative
- **Start date:** July 1, 1992
- **End date:** December 31, 1992
- **Promotion number:** 2.655



HP EtherTwist Buy Three, Manage Free

new

With this promotion, you will receive a free copy of HP OpenView Interconnect manager/DOS network management software (PIN 27256D) when you buy any three manageable HP EtherTwist hubs, bridges, and/or routers — a savings of \$4,000. You can participate in the promotion by mailing a special claim card (received from direct mail, HP FIRST, or your authorized HP dealer), the bar code labels from the product packages, and a copy of your invoice to HP. HP will fulfill claims for the free software by mail.

- **Scope:** Worldwide (*check with your HP representative for local availability*)
- **Eligible products:** Manageable HP EtherTwist hubs, bridges, and routers: 26873A/74B/82A/85A/88A/88B/92A/99A
- **Start date:** September 1, 1992
- **End date:** January 31, 1993
- **Promotion number:** 2.669

National User Group Discount Coupon

new

Each person attending the National User Group Meeting will receive a \$500 promotional discount coupon that can be used against the purchase of PL 1L products (excluding consulting and all training classes less than \$2,000). More than one coupon can be used on any single order as long as the total discount percentage does not exceed 49%.

- **Scope:** North America
- **Eligible products:** PL 1L products excluding consulting and all training classes less than \$2,000. Check with your HP representative
- **Start date:** October 1, 1992
- **End date:** March 31, 1992
- **Promotion number:** 2.685

Peripherals

HP Block Mode Terminal Trade-in

end

If you purchase a minimum of five HP 700196 or 700198 block mode terminals, you can trade in five of your old HP 3000 block mode terminals and receive a trade-in credit. One trade-in credit per eligible terminal order.

- **Scope:** Worldwide (*check with your HP representative for local availability*)
- **Eligible products:** P/Ns C1064A/G/W, C1065A/G/W, C1084W, C1085W. Block mode terminals: 262X/4X, 239X, 700192, 700194
- **Start date:** March 1, 1992
- **End date:** October 31, 1992 (extended from August 31)
- **Promotion number:** 2.611
- **Redemption:** Available also by contacting HP DIRECT at 800-225-5290 in the U.S.; for other countries contact local HP DIRECT offices

Byte for Byte — Disk Drive Trade-in

end

If you order any of the eligible multiuser C225X disk arrays, you can trade in "byte for byte" eligible HP disk drives and receive trade-in credit.

- **Scope:** North America, Latin America, Europe (*check with your HP representative for local availability*)
- **Eligible products:** P/Ns C2252B/HA, C2254B/HA; trade in: 7933/35/36/37, C2200/01/02/03/04
- **Start date:** May 1, 1992
- **End date:** October 31, 1992
- **Promotion number:** 2.636

Silvers to Gold

end

If you purchase an integrated system including 16 MB of memory, 670 MB of disk, 1.3 GB DAT tape, 8-port MUX, 8-user license, and a system console, you can receive the entire system for a promotional price.

- **Scope:** North America
- **Eligible products:** P/Ns A1716AR/40AR, A1404AR/36AR, or C2282AR
- **Start date:** August 1, 1992
- **End date:** October 31, 1992
- **Promotion number:** 2.659

DesignJet Plotter Sell Off

end

If you purchase an HP DesignJet plotter during the promotional time period, you can receive a 15% promotional discount.

- **Scope:** North America
- **Eligible products:** P/Ns C1633A, C1633B
- **Start date:** August 1, 1992
- **End date:** October 31, 1992
- **Promotion number:** 2.660

60-Day Money-Back Guarantee on 700/60 Terminals

end

If you are interested in evaluating an HP 700160 ergonomic terminal, you can order a terminal with this risk-free offer. HP will accept return of the product for 60 days after shipment and will also pay the return freight.

- **Scope:** North America
- **Eligible products:** P/Ns C1080A, C1080G
- **Start date:** August 1, 1992
- **End date:** October 31, 1992
- **Promotion number:** 2.664

Optical Library Trade-in

If you are a current Optical Library user, you can trade in your used unit and purchase a new high-performance drive library (Models 20C, 60C, or 100C), of equivalent or greater capacity, and receive trade-in credit. Exception: Model 10 can only be traded in for a Model 20C or higher.

- **Scope:** Worldwide (*check with your HP representative for local availability*)
- **Eligible products:** P/Ns C1700C/04C/10C/14C/15C
- **Start date:** September 1, 1992
- **End date:** June 30, 1993
- **Promotion number:** 2.671

Support

System Support Software Assistance Discount

end

If you purchase eligible HP 9000 Series 800 Business Servers, you can receive a 35% promotional discount off HP System Support — Software Assistance.

- **Scope:** Worldwide (*check with your HP representative for local availability*)
- **Eligible products:** P/Ns A1703A/04B/06A/51B/65A/66A/68A/69A, A2306A/07A
- **Start date:** September 1, 1992
- **End date:** October 31, 1992
- **Promotion number:** 2.673



Announcing HP SQL for IMAGE

**New SQL Tools Available
With *SQL for IMAGE***

<p>Current 4GL/Tools on TurboIMAGE</p> <ul style="list-style-type: none"> ■ Cognos ■ Speedware ■ ALLBASE Toolset ■ IBI Focus ■ Uniface ■ JYACC 	<p>New SQL 4GLs</p> <ul style="list-style-type: none"> ■ Gupta SQLWindows ■ Powersoft Toolset 	<p>New End-User Tools</p> <ul style="list-style-type: none"> ■ Gupta Quest ■ Channel Computing ■ Forest and Trees ■ Cognos Impromptu
--	---	--

HP SQL for IMAGE is a read/write SQL interface to HP TurboIMAGE databases that makes TurboIMAGE a relational DBMS compatible with client/server tools on HP ALLBASE/SQL. It is ideal for MIS, end users, and HP Channel Partners.

HP SQL for IMAGE was announced at Interex and is scheduled to be available as a separate product with a later release of the MPE/iX operating system. Shipments of the full read/write version are targeted to begin mid-1993, and a read-only version is planned for late-1992.

Features and benefits

For MIS, HP SQL for IMAGE provides structured query language (SQL) to existing TurboIMAGE data and improves application programmer productivity through SQL-based 4GL development and maintenance tools.

For end users, HP SQL for IMAGE provides access to new client/server reporting tools featuring graphical user interfaces (GUI) for use with PC-based tools. Users can cut and paste between SQL for IMAGE applications and PC spreadsheets or move word processor text into the HP 3000. New and emerging end-user reporting tools put access to HP 3000 data at the users' fingertips, which offloads MIS staff from the constant creation of new reports.

For HP Channel Partners, HP SQL for IMAGE allows new application modules to coexist with applications and TurboIMAGE data. Older modules can be given new life with GUIs from SQL-based client/server tools without having to change the underlying data.

HP OpenMail clients of choice strategy

HP OpenMail is a native X.400, standards-based messaging system that provides user and administrator functionality at one of the lowest overall costs of ownership in the industry. HP OpenMail is pursuing an open, standards-based strategy to meet user needs for integration into multi-vendor, client/server computing environments.

HP OpenMail will support leading APIs such as MAPI (Microsoft's[®] messaging API) and VM (vendor-independent messaging), which will enable users to have a choice in messaging clients and applications. Recently, there have been announcements with Microsoft, Lotus[®] cc:Mail, and Clarity of developments that will allow the MS Mail 3.0 Windows client, the cc:Mail Windows client, and Clarity Rapport to run as native clients with HP OpenMail. The value to users is that they can have access to a robust, standards-based messaging backbone from HP, along with a choice of client user interfaces. HP OpenMail will help eliminate e-mail gateways that have proliferated throughout large corporate mailing environments, as well as lower the support and administration costs involved with LanMail systems.

Microsoft is a U.S. registered trademark of Microsoft Corporation.

Lotus is a U.S. registered trademark of Lotus Development Corporation.

HP Corporate Business System price increase

Prices for the HP 3000 Corporate Business Systems listed below will increase on November 1. At the same time, trade-in credits for HP 3000 Series 980 toward the purchase of the HP Corporate Business System **will** decrease. The new prices will be reflected on the October HP Price List. Users can place orders at the old prices through the end of October.

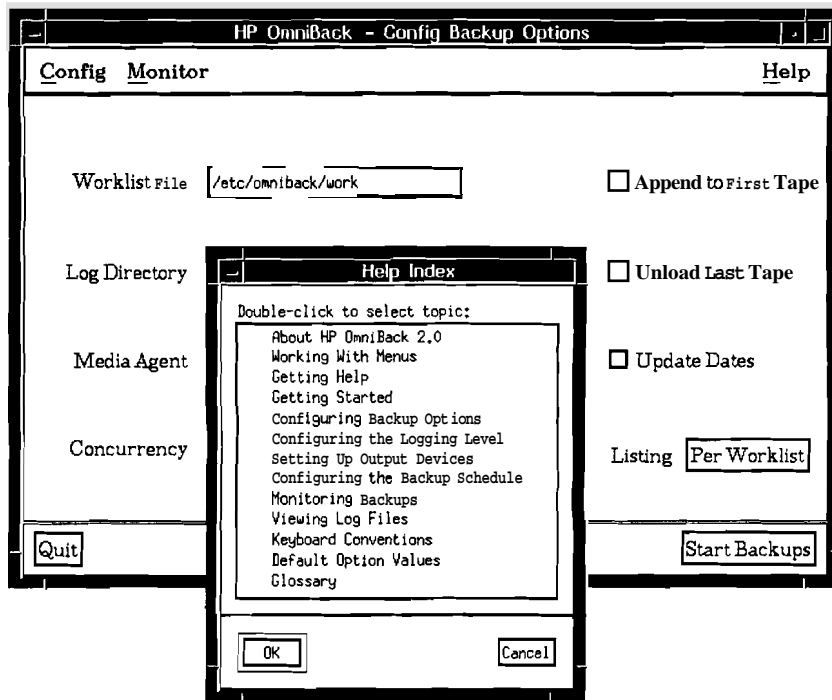
Check with your HP representative for appropriate Series 980 upgrade paths. Return credit price reductions for other HP 3000 systems will also take effect on November 1.

Product No.	Description
A1809A	HP 3000 Corporate Business System DX
Opt. 880	CS 990
Opt. 881	CS 9921100
Opt. 882	CS 9921200
Opt. 883	CS 992/300
opt. 884	CS 992/400
Opt. 725	Return Series 980/100
Opt. 726	Return Series 9801200
Opt. 727	Return Series 9801300
Opt. 728	Return Series 9801400
A1811A	HP 3000 Corporate Business System
Opt. 880	CS 990
Opt. 881	CS 9921100
Opt. 882	CS 9921200
Opt. 883	CS 9921300
Opt. 884	CS 9921400
Opt. 725	Return Series 9801100
Opt. 726	Return Series 9801200
Opt. 727	Return Series 9801300
Opt. 728	Return Series 9801400

HP
3000
Series
980
Upgrade
Paths

10/28/92

New HP OmniBack release adds functionality



Additional functionality has been added to HP OmniBack and OmniBack/Turbo with the release of new Version A.02.03.

HP OmniBack enhancements

- *Easy restore through introduction of a log file analyzer that eliminates the need for reviewing log files manually* — The log file analyzer extracts all information needed from the log files and generates the appropriate restore command. This command can be executed automatically or manually.

- *Support of Sun SPARCstations and MS-DOS® clients* — Sun SPARCstations can be backed up to HP OmniBack Domain or HP-UX backup servers. Supported Sun/OS versions are 4.1.1 and 4.1.2. MS-DOS PC integration into the HP OmniBack backup environment is offered through interoperation of HP OmniBack with QUEST Plan-B/UX. PC backup is initiated and managed without user intervention and can even proceed while PC users are running applications. Both HP LANManager and Novell NetWare PCs are supported.

HP OmniBack/Turbo enhancements

- *All enhancements made to HP OmniBack*
- *Online backup capability for Oracle databases* — Through the establishment of online backup using the Oracle HotBackup feature in combination with HP OmniBack/Turbo, system downtime during backup of Oracle databases is eliminated.

Support

Supported operating system versions are HP-UX 8.0X and 9.0, Domain/OS SR 10.3 and 10.4, and SunOS 4.1.1 and 4.1.2. Systems running the older versions of HP OmniBack or OmniBack/Turbo can be mixed with ones running the new versions. However, depending on the configuration, not all of the new functionality may be available. The same applies to the integration of systems running HP-UX 7.X. An update of all systems to the new HP OmniBack and OmniBack/Turbo version is recommended.

For both products, the enhanced versions for HP-UX 8.0X, Domain/OS SR 10.3 and 10.4, and Sun/OS 4.1.1 and 4.1.2 will be available by mid-October. Shipments are planned for the end of the year for corresponding HP-UX 9.0 products.

Ordering information

HP OmniBack and OmniBack/Turbo product structure and pricing remain unchanged.

To order the new versions, specify a required shipment date of October 12 or later. All orders shipped after October 12 will automatically receive the new versions.

HP OmniBack and OmniBack/Turbo for HP Apollo 9000 Series 700 on the application CD will not be available before January 1993 due to manufacturing dependencies. If you need the software before then, order the DAT/DDS medium instead.

Product No.	Description
<i>HP OmniBack</i> products	
B1920A	License to use for HP 9000 Series 600/800 business servers on HP-UX 8.0W9.0
B1942A	Base license for HP 9000 Series 300 and HP Apollo 9000 Series 400/700 on HP-UX 8.0X/9.0, Domain/OS 10.3/10.4, Sun/OS 4.1.1/4.1.2 workstations
B1943A	Node license for HP 9000 Series 300 and HP Apollo 9000 Series 400/700 on HP-UX 8.0X/9.0, Domain/OS 10.3/10.4, Sun/OS 4.1.1/4.1.2 workstations
B1944A	Platform software for Series 300/400 on HP-UX 8.0X
B1944B	Platform software for Series 300/400 on HP-UX 9.0
B1945A	Platform software for Series 700 on HP-UX 8.0X
B1945B	Platform software for Series 700 on HP-UX 9.0
B1949A	Platform software for Series 600/800 on HP-UX 8.0X
B1949B	Platform software for Series 600/800 on HP-UX 9.0
B1947A	Platform software for Domain/OS 10.3/10.4
B1948A	Platform software for Sun/OS 4.1.1/4.1.2
<i>HP OmniBack/Turbo</i> products	
B1921A	License to use for Series 600/800 business servers on HP-UX 8.0X/9.0
B1929A	License to use for Series 700 workstations on HP-UX 8.0X
B1929B	License to use for Series 700 workstations on HP-UX 9.0
B1929A	Platform software for Series 700 on HP-UX 8.0X
B1929B	Platform software for Series 700 on HP-UX 9.0
B1950A	Platform software for Series 600/800 on HP-UX 8.0X
B1950B	Platform software for Series 600/800 on HP-UX 9.0

MS-DOS is a U.S. registered trademark of Microsoft Corporation.

New HP Document Manager

HP Document Manager (P/Ns B3109A and B3110A) is part of the Knowledge Worker Solution of the newly announced HP Cooperative Computing Solutions. It is a tool for knowledge and clerical workers that provides for easy storage and retrieval of all types of shared and unshared PC documents, including word processing documents, spreadsheets, graphics, and images. HP Document Manager includes capabilities for version control, automatic archiving, and robust security control.

HP Document Manager is targeted toward large- and medium-sized companies with LAN-based PCs needing to share PC data, especially organizations that maintain large volumes of documents, such as pharmaceutical companies, financial and legal firms, and government.

Features and benefits

- *Attribute-based retrieval* — allows documents to be retrieved on over 40 standard and administrator-defined attributes (such as author, date created, document type, department) and up to 50 user-defined key words per document; helps users find and retrieve documents without knowing file, directory, or server names
- *Support for any PC document* — works with any application in use on PCs, whether it stores data as DOS or Microsoft Windows files, or HP NewWave objects

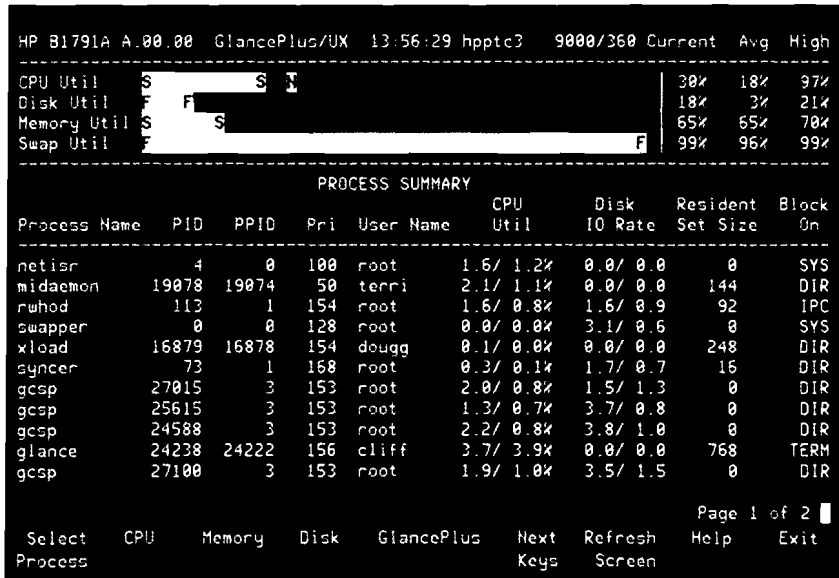
- *Document version control* — maintains version control to protect against accidental document loss and provide an audit trail for change control purposes
- *Automatic archiving* — archives old document versions or infrequently accessed documents to tape or optical storage, thus lowering storage costs by use of low-cost storage media
- *System administration* — provides extensive document security through access control lists and high availability through support of online system backups; helps MIS provide glass-house security and availability to PC data

Ordering information

Product No.	Description
B3109A	HP Document Manager single user license
Opt. UDN	1-24 users
Opt. UDP	25-49 users
Opt. UDR	50-99 users
Opt. UDT	100+ users
Opt. AG6	MS Windows users
Opt. AG7	HP NewWave users
B3110A	HP Document Manager media, administration and user manuals
Opt. AAU	CD-ROM
Opt. AAH	DAT
B3110-90008	Additional user manuals for MS Windows
B3110-90009	Additional user manuals for HP NewWave

Contact your HP representative for more information.

Introducing HP GlancePlus Pak/UX for HP 9000 systems



HP GlancePlus Pak/UX is a new performance tool that combines HP GlancePlus/UX and Performance Collection software, formerly known as the HP LaserRX/UX Collection software. It is ideal for HP 9000 users who want an online monitoring and diagnostic tool but also want to log historical data. HP GlancePlus Pak/UX is available on HP-UX 8.0 or later.

Features and benefits

HP GlancePlus/UX software provides online monitoring and diagnostic capabilities. Users can view current system activity and isolate and resolve performance bottlenecks when they occur.

HP Performance Collection software provides users with historical performance data for long-term trending. A patented SCOPE program efficiently logs performance metrics that can be viewed on the host HP 9000 or exported to spreadsheet and graphics packages. (For more information on the HP Performance Collection software, see following article.)

Combining these software capabilities into one product gives users more flexibility and lower support costs (one support number).

Product line positioning

Similar to HP GlancePlus, HP GlancePlus Pak/UX is positioned as easy to use, entry level, and affordable. It is considered the entry-level performance solution for HP-UX users; the standalone HP GlancePlus product should be considered as the solution for users who do not need historical trending data. Users who are interested in historical information also should consider HP LaserRX/UX Analysis software for sophisticated performance data analysis.

Ordering information

Product No.	Description
B3169A	HP GlancePlus Pak/UX for HP 9000 Series 6001800
Opt. AHO	For Model 80818071817
Opt. AEL	For Model 815/822/827/837
Opt. AE5	For Model 825/832/635/847/857
Opt. AE6	For Model 835/842/645/867/877
Opt. AEN	For Model 84018451852
Opt. AEP	For Model 85018551860
Opt. AH1	For Model 87011001400
Opt. APB	HP-UX 8.00/8.02 release option
Opt. APD	HP-UX 8.06 release option
Opt. AAO	1/4-inch cartridge media
Opt. AA1	5/8-inch magnetic tape media
Opt. AAH	DAT media
Opt. AA4	QIC media (HP-UX 8.0 only)
B3168A	HP GlancePlus Pak/UX for HP Apollo 9000 Series 700
Opt. APE	HP-UX 8.05 release
Opt. APF	HP-UX 8.07 release
Opt. AAH	DAT media
B3170A	HP GlancePlus Pak/UX for HP 9000 Series 300/ HP Apollo 9000 Series 400
Opt. AE8	For Models 32X-34X
Opt. AE9	For Models 35X-37X, 4XX
Opt. APB	HP-UX 8.00/8.02 release
Opt. AAO	1/4-inch cartridge media
<i>Additional P/N B3169A/B3168A/B3170A options</i>	
Opt. APH	HP-UX 9.0 release
Opt. AAU	CD-ROM certificate (available HP-UX 9.0)
Opt. OBE	User's manual

HP LaserRX/UX enhancements and repricing

HP LaserRX/UX Analysis and HP LaserRX/UX Collection are system resource management software that provide comprehensive system activity information for the HP 9000.

Both the Analysis and Collection software components of HP LaserRX/UX have been enhanced to provide more power and flexibility in HP 9000 systems management. Effective with the October HP Price List, HP LaserRX/UX Collection software has been repriced and renamed HP Performance Collection software for HP-UX systems.

Features and benefits

- *New non-CD based analysis software* — Analysis software will be distributed on 5"-and 3"-inch floppy media. There is no new functionality in this analysis software update, but the new media removes the CD-ROM drive hardware requirement.
- *New host access to data* — Access to the performance data is available directly on the HP 9000. The EXTRACT program has a new export command that can produce ASCII or binary performance data files on the HP 9000. This allows users to generate reports and transfer data to other analysis packages from the host system.
- *New user interface for UTILITY and EXTRACT program* — A command-driven user interface replaces the prompt-and-answer dialog used in earlier versions. Command-line capability has also been added. Enhancements to the UTILITY and EXTRACT programs make it easier to accomplish unattended batch operations.

Ordering information

Product No.	Description
B1766B	HP LaserRX/UX Analysis software
B1767B	HP Performance Collection software for HP 9000 Series 300/HP Apollo 9000 Series 400 on HP-UX 7.0
B2662A	HP Performance Collection software for Series 3001400 on HP-UX 8.0
<i>P/N B1767B/B2662A options</i>	
Opt. AE8	For Models 32X-34X
Opt. AE9	For Models 35X-37X, 4XX
B1768B	HP Performance Collection software for HP 9000 Series 6001800 on HP-UX 7.0
B2663A	HP Performance Collection software for Series 8001600 on HP-UX 8.0
<i>P/N B1768B/B2663A options</i>	
Opt. AH0	For Model 808
Opt. AEL	For Model 815/822
Opt. AE5	For Model 825/832/635
Opt. AE6	For Model 835/842/645
Opt. AEN	For Model 84018451852
Opt. AEP	For Model 85018551860
Opt. AH1	For Model 870
B1806A	HP Performance Collection software for HP Apollo 9000 Series 700

HP Performance Collection software for HP-UX 7.0 and 8.0 became available in mid-September. Non-CD-based HP LaserRX/UX Analysis software **will** be available in mid-October.

HP LaserRX/UX users on software support **will** receive HP Performance Collection software and the non-CD-based Analysis software as part of an HP LaserRX/UX update.

DAT data compression support on Series 800

With the introduction of HP-UX 9.0, the HP Series 6400 Model 2000DC (P/N C1521B) is fully supported on HP 9000 Series 800 systems. The recent release of HP-UX 9.0 provides support of the following features:

- Data compression
- Boot/install/update
- Standard HP-UX backup commands including fbackup and frecover
- Digital Data Storage (DDS) Fastsearch (fast random file access) via fbackup and frecover
- DAT with HP OmniBack and OmniBack/Turbo

Users can take advantage of the significant performance benefits of data compression. The HP Series 6400 Model 2000DC standalone SCSI DAT drive stores 4-8 GB of data on a single 90-meter DDS cassette and transfers up to 2.5 GB of data per hour. Data compression performance is wholly dependent on the type of data being compressed, and transfer rates are host and operating system dependent.

DAT with data compression is also supported under HP-UX 9.0 as an integrated drive in HP 9000 Model 8X7 systems. Order Option AT2 to take advantage of the higher performance DAT drive with data compression.

Uninterruptible power supplies for standalone HP systems only

For U.S. and Canada only

Hewlett-Packard has received calls concerning the availability of uninterruptible power supplies (UPS) for HP rackmounted computer systems. HP recommends only the following standalone UPS for HP's standalone systems:

- APCC-600
- APCC-1250
- DELT-2026
- DELT-2036

Do not order the following UPS for computer systems, as they are for use with test and measurement instruments and equipment only:

- DELT-2026R2
- DELT-2025R3
- DELT-2036R2
- DELT-2035R1
- DELT-2025R1
- DELT-2035R2
- DELT-2025R2
- DELT-2035R3
- E3664A

For users interested in using a standalone UPS with racked systems, a distribution/converter box is available directly from Deltec for approximately \$200. Contact Ken Stowe at Deltec, 619-2914211, for more information.

Option 800 for HP Series 6400 Model 2000DC discontinued

With the announcement of HP-UX 9.0, Option 800 for the HP Series 6400 Model 2000DC standalone SCSI DAT drive (P/N C1521B) will be discontinued. Option 800 provided support for P/N C1521B on HP 9000 Model 8X7 systems running HP-UX 8.02.

For users who do not move to HP-UX 9.0 immediately, Option 800 will remain on the HP Price List until the end of February 1993. Delivery may be scheduled no later than May 31, 1993.

HP SRM discontinued

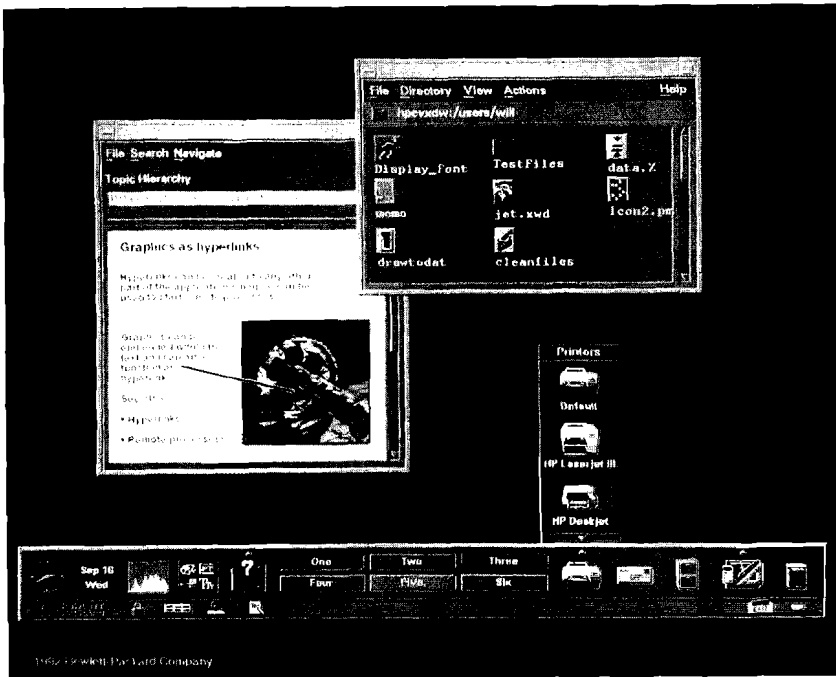
On January 1, 1993, the remaining three HP SRM products will be discontinued:

- P/N 50962A — interface card for HP 9000 Series 2001300, HP Apollo 9000 Series 400
- P/N 50963A — interface card for HP Vectra PC
- P/N 98693A — SRM Access Utilities for the HP 9000 Series 200/300

All options associated with the SRM products, such as material update services, will also be obsoleted. Support life is five years.



HP Visual User Environment Version 3.0



The HP Visual User Environment (VUE) Version 3.0 is a graphical user interface for HP-UX 9.0. It is the newest version of HP W E, the standard graphical user interface bundled with HP-UX 9.0 on Series 700 and 800 systems.

HP W E enhances the competitiveness of HP workstations and multiuser systems by providing superior ease of use.

HP VUE Version 3.0 is bundled with HP-UX 9.0 and is targeted toward technical and commercial HP Apollo 9000 Series 700 and HP 9000 Series 800 users.

HP VUE 3.0 will also be available on Sun SPARCstations running Solaris 1.0 or greater, DEC workstations running Ultrix 4.2 or greater, IBM RS/6000 workstations running AIX 3.2 or greater, and Intel PCs running a UNIX-based operating system. The non-HP versions will be available in the first half of 1993.

Features and benefits

The overall usability of HP W E 3.0 has been improved with easier configuration of the front panel, easier configuration of the action/file type database to create customized actions, and more complete integration with SAM. HP W E 3.0 includes new multicolored icons, slide-up menus, and a desktop that allows random placement of icons on the screen background. The performance has been improved by reducing File Manager swapping and including HP W E Lite, a configuration that allows better performance on minimally configured workstations. The HP VUE Lite session can be chosen at login and includes the Login Manager, Front Panel, Style Manager, and Help Manager. The File Manager and Session Manager are not started up with HP W E Lite.

HP W E 3.0 will be available in French, German, Japanese, Chinese, Korean, and Taiwanese. The language can be chosen at login.

- *Login Manager* — provides an easy way to begin a work session.
- *File Manager* — provides easy navigation of local and remote directories, and one-step manipulation of files.
- *Workspace Manager* — provides multiple workspaces that reduce window clutter.
- *Style Manager* — allows customization of colors, backgrounds, fonts, and other system settings.
- *Session Manager* — saves work and restores it to the same state when you login again.
- *Revised Help Manager* — adds graphics, multiple fonts, audio annotation, color, hypertext and hypergraphics capability, and hard-copy print support for context-sensitive help and improved ease of learning.
- *New utilities* — Icon Editor allows creation of color icons; Text Editor allows simple editing of text files; File Annotator allows text and audio annotating of files.

Ordering information

Science Applications International Corporation (SAIC) continues to port, distribute, and support HP W E on Sun Microsystems, IBM, DEC, and Intel platforms, and is marketing the product as SAIC W E. SAIC is currently shipping the Sun and IBM versions of HP W E 2.01. For more information, contact Laura Jordan at SAIC, 619-546-6083.

HP ScanJet IIc scanner for Series 700 workstations

The HP ScanJet IIc scanner for HP Apollo 9000 Series 700 workstations (P/N C1788A) with the HP ScanJet IIc scanner interface kit for Series 700 (P/N A2229A) is a complete scanning solution for PA-RISC workstations.

With the HP ScanJet IIc scanner, HP provides moderately priced color scanning on workstations — an industry first — as a complementary tool to enhance third-party applications in the areas of electronic publishing and emerging multimedia applications.

The scanner is ideal for technical and desktop publishing, multimedia applications such as computer-aided training and presentation graphics, and office productivity applications such as fax input and compound document creation where image capture capability is required.

The HP ScanJet IIc scanner for the Series 700 is currently the lowest-priced, highest-quality, flatbed scanning solution on UNIX systems from a major workstation vendor.

Features and benefits

- *Auto exposure* — easy scanning for novices similar to point-and-shoot photography; no need to adjust brightness and contrast, but controls can be adjusted manually at user discretion

- *Automatic document feed support* — supports batch feeding of up to 50 documents freeing users from inconvenient single-sheet input
- *SCSZ-2 compliant* — seamless connection to Series 700 workstations without interfering with storage devices
- *Context sensitive online help* — easy-to-use help system similar to PCs and Apple Macintosh
- *One-pass scanning* — improves scanning speed

Ordering information

Product No.	Description
C1788A	HP ScanJet IIc scanner for Series 700 workstations (includes P/N A2229A interface kit)
Opt. AAH	Software on DDS (4-mm DAT) tape media
Opt. AAU	CD-ROM certificate
Power cord options (must be specified for non-U.S. orders)	
Opt. 900	U.K.
Opt. 901	Australia, New Zealand
Opt. 902	European
Opt. 903	North America, Taiwan, Korea
Opt. 906	Switzerland
Opt. 912	Denmark
Opt. 917	Republic of South Africa, India
Opt. 918	Japan
Opt. 919	Israel
A2229A	HP ScanJet IIc scanner interface kit for Series 700 workstations (includes HP DeskScan/UX software media and license to use, hard-copy user manual, and SCSI cable and terminator)
C1751A	HP ScanJet IIc scanner automatic document feeder

UNIX is a registered trademark of UNIX System Laboratories Inc. in the U.S.A. and other countries.

New HP Series 6000 SCSI mass storage systems

The HP Series 6000 SCSI mass storage systems and expansion kits are SCSI mass storage systems with new 1- and 2-GB drives that provide external disk storage, 2-8 GB DAT, 600-MB CD-ROM, and 650-MB rewritable optical secondary storage. It replaces the HP Series 6000 Models 1350SE, 670SE, and 1350S.

The HP Series 6000 SCSI mass storage system is targeted toward HP 9000 Series 300 and HP Apollo 9000 Series 400/700 users who need external online and secondary mass storage.

Features and benefits

- *New drives* — 1- and 2-GB HP designed and manufactured SCSI-2 disk drives with 10.5 and 11.5 ms average seek and up to 10 MB/s channel transfer rate
- *Up to 7 GB disk storage* — an increase from 4.6 GB maximum disk storage with previous storage systems
- *New easy-to-order preconfigured storage systems* — systems preconfigured with 1-GB disk and 2-GB DDS DAT, 2-GB disk and up to 8-GB DDS DC DAT, or two 2-GB disks (for 4 GB total disk storage); 2-GB disk base model also available
- *Same flexible solution* — 1- and 2-GB disk, DAT, CD-ROM, and rewritable optical expansion kits available in addition to preconfigured systems for flexible configuration

- *Same minitower or rackmount enclosures* — floor-standing minitower enclosure that houses up to seven half-height devices; rackmount enclosure that holds up to three full-height devices or five half-height devices and can be rackmounted in HP's Design Plus cabinets
- *Testing and support* — on Series 300/400/700 with HP-UX 9.0

Ordering information

Product No.	Description
Rackmount mass storage systems	
C3020R	1-GB disk/2-GB DAT
C3021R	2-GB disk/8-GB DAT
C3023R ¹	2-GB disk
C3024R ^{1,2}	2-GB disks
Tower mass storage systems	
C3020T	1-GB disk/2-GB DAT
C3021T	2-GB disk/8-GB DAT
C3023T ¹	2-GB disk
C3024T ^{1,2}	2-GB disks
Expansion kits	
C3027U ¹	1-GB disk
C3028U ¹	2-GB disk
C2293U ²	600-MB CD-ROM
C2294A	650-MB R.O. (for rack)
C2294T	650-MB (for tower)
C2297U ²	2-GB DAT
C2298U ²	8-GB OAT

¹ Option 001, specifying workstation firmware on the drives, must be ordered.

² These products replace P/Ns C2293A/T, C2297A/T, and C2298A/T, respectively.

HP EGS/UX patch required for Model 425e/EVRX

The current distribution of HP Engineering Graphics System (EGS)/UX Release AO1.00, the final major release of HP EGS on the HP-UX operating system, lacks graphics drivers to support the EVRX. A patch is required to run HP EGSNX AO1.00 on HP Apollo 9000 Model 425e/EVRX. HP EGS/UX was removed from the September HP Price List and entered a standard five-year support life.

Release AO1.00 requires the HP-UX 8.0 operating system, includes the MI/Archive link, provides support of HP VUE, and provides fixes to approximately 30 serious/critical product defects and 10 learning product defects. It adds support of Models 425e and 433s/t.

The Model 425e does not support the VRX graphics top and is configured only with the EVRX graphics top.

Contact your HP representative for ordering information.

New country-specific PC-style keyboards

New HP-HIL PC-style keyboards are available for nine HP-UX 9.0 localization kit options. The keyboards replace the English or German language keyboards previously shipped with the PC-style localization options.

Ordering information

Product No.	Description
A2205B	HP-HIL PC-style keyboard
Opt. ABE	Spanish (European)
Opt. ABF	French (European)
Opt. ABN	Norwegian
Opt. ABP	Swiss (German)
Opt. ABQ	Swiss (French)
Opt. ABS	Swedish
Opt. ABU	U.K. English
Opt. ABY	Danish
Opt. ABZ	Italian

Localized software versions for workstations

HP-UX 9.0 has been localized for Japanese, German, French, traditional Chinese, Korean, and simplified Chinese for HP Apollo 9000 Series 400/700 and HP 9000 Series 300. Users can get localized bundles consisting of HPLIX 9.0 run time (two users), the appropriate NLI product (where required), and localized messages/HP W E and documentation. The products are available on DAT or CD-ROM.

Localized versions of Instant Ignition are orderable for Japan and Germany. Localized keyboard kits containing 9.0 or 8.0X learning products are orderable with the other products.

Localized software versions for 8.0 and 8.05/8.07 will remain on the HP Price List. Effective September 1, the upgrade to local language option (Opt. OHG) has been put into support life and is no longer orderable.

An eight-user Series 700 HP-UX 9.0 product that supports two versions — HP-UX 8.07 and HP-UX 9.0 — is available for Japan.

Product No.	Description
<i>Series 700 products</i>	
B2387A	2-user license, Japanese
B2487A	8-user license, Japanese
B2395A	2-user license, Korean
B2816A	2-user license, traditional Chinese
B2396A	2-user license, German
B2397A	2-user license, French
B2815A/B-8/9	Documentation set, Japanese
B2816A	Documentation set, traditional Chinese
B2396A	Documentation set, German
B2911A	Instant Ignition, Japanese
B2912A	Instant Ignition, German
<i>Series 300/400 products</i>	
B2386A	2-user license, Japanese
B2388A	2-user license, Korean
B2389A	2-user license, traditional Chinese
B2390A	2-user license, simplified Chinese
B2391A	2-user license, German
B2392A	2-user license, French
B3149A	32-user license, Japanese
B2814A/B-8/9	Documentation set, Japanese
B2389A	Documentation set, traditional Chinese
B2390A	Documentation set, simplified Chinese
<i>Series 300/400/700 products</i>	
A1099C	Keyboard
A2205B	Keyboard
A1099B	Keyboard

HP SharedPrint/UX for Series 700 workstations

HP SharedPrint/UX Version 1.0 (P/N B2154.4) is client/server printing software designed to enhance HP Apollo 9000 Series 700 basic printing capabilities. The client portion includes graphical user interface, while the server provides the ability to print many types of file formats to a multitude of HP and some third-party printers.

It is targeted toward workstation users who require high-quality hard-copy output in both technical and commercial environments.

Features and benefits

- *OSF/Motif™ W E integrated user interface* — allows users to make print requests controlling the print job parameters/options, queue status, and printer setup and configuration
- *Integration to HP Systems Administration Manager (SAM)* — allows printer setup and configuration (HP-UX 9.0)
- *Online, context-sensitive HELP system* — minimizes the use of hard-copy documentation
- *Drag and drop printing* — allows files to be dropped on the printer icon
- *Support of multiple print paths* — increases flexibility in text, graphics, and compound document printing to a wide variety of HP hard-copy devices

HP SharedPrint is also available as an option to HP OpenSpool. HP OpenSpool provides robust single point of view spool management for HP-CX and SunOS environments.

OSF/Motif is a trademark of the Open Software Foundation in the U.S. and other countries

New VAC term: "HP Channel Partner" replaces "Value-Added Business"

For U.S. and Canada Only

In keeping with HP's increasing focus on indirect channels marketing, HP's Americas Value-Added Channel (VAC) Marketing Center is introducing a new term to refer to value-added businesses that better reflects your importance to HP.

"HP Channel Partner" is the new replacement term for "value-added business."

HP coined the term value-added business (VAB) several years ago to collectively describe companies that resell or leverage sales of HP computer systems products. The term was created to connote a much closer relationship with these companies than the phrase "third party" implies. Since then, HP's strategic commitment to indirect channels marketing has become even stronger, renewing the need to revise HP channels terminology.

From now on, any leverager or reseller of computer systems products that has a current signed HP channel contract or catalog agreement may refer to itself as an HP Channel Partner. The eligible channels within the HP Computer Systems Organization (CSO) include:

- Certified workstation reseller (CWR) — includes franchisor and franchisee
- Complementary vendor (CV)
- Distributor

- Distributor authorized reseller (DAR)
- Independent software vendor (ISV), formerly software supplier
- Master VAR.
- Original equipment manufacturer (OEM)
- Systems integrator (SI)
- Value-added reseller (VAR)

This change in nomenclature is effective immediately within the U.S. and Canada. Check with your local HP representative for the appropriate non-English terminology recommended for use outside the U.S.

Before you begin referring to your company as an HP Channel Partner, be sure that you fully understand and follow the guidelines involved in using the new terminology as outlined here. Strict adherence to these guidelines will ensure that yours and HP's use of the word "partner" will not be legally misconstrued.

HP Channel Partner terminology guidelines

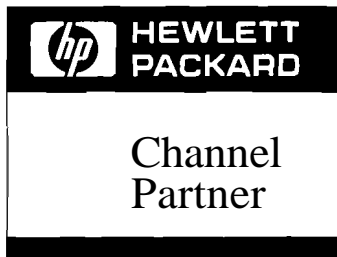
1. You may refer to your company as an HP Channel Partner if your company has a current signed channel contract or catalog agreement with HP.
HP Channel Partners include: CWRs, complementary vendors, distributors, DARs, ISVs, master VARs, OEMs, systems integrators, and VARs.

-
2. HP Channel Partner is a proper noun. Always capitalize the first letter of each word.
 - Use: HP Channel Partner or Channel Partner
 - Don't use: HP channel partner or channel partner
 3. Never drop the word "Channel." You may drop the HP after the first time you use the phrase "HP Channel Partner," but always include the word "Channel" as part of the phrase.
 - Use: HP Channel Partner, Channel Partner, or workstation Channel Partner
 - Don't use: Partner, HP Partner, or Workstation Partner
 4. Don't mix other channel terms with Channel Partner. Channel Partner is a standalone term. It should not be combined with any other channel descriptors such as value-added, third-party, etc.
 - Don't use: Value-Added Channel Partner, VAB Channel Partner, or Third-Party Channel Partner
 5. Be careful not to suggest that your use of the term "HP Channel Partner" implies any actual legal partnership or sharing of management responsibility with HP.



New insignia available for HP Channel Partners

For U.S. and Canada only



Hewlett-Packard has created a special insignia for you to use when promoting your relationship with HP. The HP Channel Partner insignia has been designed for use in all your promotional materials, advertising, signage, and stationary. It will help your customers to quickly recognize you as an HP Channel Partner that leverages or sells quality HP products.

To qualify to use the insignia, your company must meet two requirements:

1. You must have a current signed channel contract or catalog agreement with HP in the U.S. or Canada.
2. You must have a signed copy of the "HP Channel Partner Insignia Exhibit" (Exhibit I-5) on file with HP.

In the future, Channel Partners will automatically complete Exhibit I-5 as part of the HP contract initial signing or renewal process. Meanwhile, HP is taking special steps to ensure that your company is aware of the new channel program benefit.

By mid-October, HP North American Field Organization (NAFO) contracts representatives will have sent copies of the insignia exhibit to Channel Partners in the U.S. and Canada whose contracts they manage. These include distributors, value-added resellers (VARs), master VARs, independent software vendors (ISVs), systems integrators, and original equipment manufacturers (OEMs). NAFO contracts reps are responsible for tracking insignia exhibits for these Channel Partners and for forwarding their requests for insignia artwork to NAFO headquarters for fulfillment.

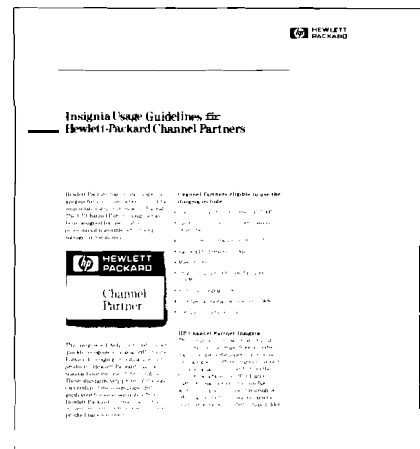
Insignia exhibits will be handled differently for those Channel Partners whose contracts are not managed by NAFO contract representatives. Several key HP channel program managers will handle this task for the participants in their respective programs. Namely, for certified workstation resellers (CWRs), distributor authorized resellers (DARs), and complementary vendors (CVs). These program managers are responsible for mailing exhibits, tracking them, and fulfilling insignia artwork requests.

In addition to the exhibit mailings, the Americas Value-Added Channels Marketing Center is mailing an announcement letter to Channel Partner presidents, executives, and marketing contacts listed in the VALID database. The letter informs them of the new insignia and encourages them to sign and return the insignia exhibits their companies receive separately.

Any Channel Partner that has signed and returned Exhibit I-5 is entitled to receive a copy of the "Insignia Usage Guidelines for HP Channel Partners" (P/N 5091-4512EUS), which contains the camera-ready artwork for the insignia.

To request a copy of the insignia exhibit, or artwork, contact your NAFO contracts representative, HP account representative, or appropriate channels program manager.

New insignia guidelines for HP Channel Partners



- **Title:** Insignia Usage Guidelines for HP Channel Partners
- **Audience:** HP Channel Partners with signed, channel contract or catalog agreement and Exhibit I-5 on file with HP.
- **Format:** six-page gatefold folder 9% x 11% -inch, black and white
- **P/N:** 5091-4512EUS
- **Distribution:** Guidelines describe correct use of new Channel Partner insignia, including color, size, and placement. Camera-ready artwork of Channel Partner insignia is included.



Value-Added Channels Marketing Center Mailing Program Update

For U.S. and Canada only

HP's Americas Value-Added Channels Marketing Center (VMC) is announcing several changes to the mailing services programs that it offers to eligible HP Channel Partners.

The first change involves the Installed-Base Mailing Program, which has been discontinued as a formal program. In its place, HP recommends that you use **IM**pac funds (coop dollars) to buy or rent quality mailing lists from outside sources to support your direct mail campaigns to HP customers.

The availability of **IM**pac funds now makes it possible for you to access lists from outside sources such as the *HP Professional* magazine or **INTEREX**, the International Association of HP Computer Users. These lists can be targeted to reach designated individuals in selected industries or markets. Using sophisticated lists like these, you can improve your chances of reaching your target audience and maximize the return on your lead generation expenses.

Another change in VMC programs is the temporary "hold" on the Channel Partner-to-Channel Partner (formerly VAB-to-VAB) Mailing Program. This program allowed eligible HP Channel Partners to reach other HP Channel Partners with information about their products or to solicit cross-licensing opportunities. Requests for this service have recently outstripped the VMC's ability to fulfill them. Therefore, this service is being placed on hold pending an investigation into a new database that will allow the continuation of this service in the future.

To inquire about outside mailing lists, contact:

- **INTEREX** — Liwayway Gimenez, 408-746-1220
- *HP Professional* — Jane Hope, 215-957-1500

Additions to HP FIRST

For U.S. only

You can receive copies of Hewlett-Packard sales literature via your fax machine. **HP FIRST** (Facsimile Information Retrieval System Technology) includes literature such as product briefs, data sheets, price guides, and so forth.

HP FIRST can be accessed from any **Group 3** touch-tone fax machine. Dial 208344-4809, and you will be connected to a voice-operated menu that steps you through the literature selection process.

A special section has been added to **HP FIRST**. "HP sales/training tools for Channel Partners" (index number 2295) lists HP sales and training tools that Channel Partners (in the U.S. only) can order directly through an 800 telephone number. The section **will** be updated monthly.

The computer systems items listed here have been added to the **HP FIRST** system.

Title/Description	Fax ID number
Client/Server Technology Drives Mainframe Downsizing Shift, white paper, 8 pages	2113
900 Series HP 3000 Computer Systems, 900 Series Business Computers, configuration guide, 15 pages	2120
900 Series HP 3000 Computer Systems, Series 9X7LX and 9X7 systems, configuration guide, 32 pages	2121
900 Series HP 3000 Computer Systems, Series 980/100-400, configuration guide, 13 pages	2122
900 Series HP 3000 Computer Systems, HP 3000 Corporate Business Systems, configuration guide, 46 pages	2123
HP 3000 900 Series Computer Systems, 900 Series I/O Channels, configuration guide, 16 pages	2124
900 Series HP 3000 Computer Systems, Peripherals configuration guide, 28 pages	2125
HP 3000 900 Series Computer Systems, Datacommunications & Terminal Controller, configuration guide, 21 pages	2126
HP 3000 900 Series Computer Systems, Software Media and FOS Learning, configuration guide, 19 pages	2127
HP 3000 900 Series Computer Systems, Hardware and Software Support, configuration guide, 20 pages	2128
HP 3000 900 Series Computer Systems, Miscellaneous Configuration Information, configuration guide, 21 pages	2129

Available literature

The following new literature is available through your local HP sales office. The literature is separated by product line and in order of publication number. Contact your HP representative for more information.

General

HP: The Best Alternative to Mainframe Computing white paper

- **Audience:** CIOs, MIS VPs and directors, DP managers
- **Format:** 21 pages, 8½ x 11
- **P/N:** 5091-4449E
- **Description:** Discusses new demands being made upon the traditional mainframe environment. It describes a step-by-step process of moving away from mainframes and the financial justification and payoff in implementing that strategy.

HP 3000 Systems

HP EDIT for MPE V and MPE/iX HP 3000 Systems data sheet

- **Audience:** MIS and program managers
- **Format:** 2 pages, 8½ x 11, black and white
- **P/N:** 5091-4738EUS
- **Description:** Provides information on key features, benefits, specific text editing features, specifications, and ordering information.

HP 9000 Systems

HP 9000 Series 800 High Availability Computing Products data sheet

- **Audience:** technical evaluators, decision makers
- **Format:** 8 pages, black and white
- **P/N:** 5091-1633E
- **Description:** Describes HP SwitchOver/UX, MirrorDisk/UX, disk arrays, power-fail battery backup, and reliable system components for HP 9000 Series 800.

HP-UX 9.0 Operating System data sheet

- **Audience:** technical evaluators, decision makers
- **Format:** 6 pages, black and white
- **P/N:** 5091-3626E
- **Description:** Describes new enhanced version of HP-UX that bundles in additional functionality.

Networks

HP Router Reference Guide

- **Audience:** network consultants
- **Format:** 4 pages, full color
- **P/N:** 5091-2236E
- **Description:** The reference guide was written specifically for the HP Router ER and TR products (P/Ns 27285A/86A) and includes technical data sheets, ordering information, routing services, planning guidelines, installation and usage information, and application notes.

Peripherals

HP Series 6000 SCSI mass storage solutions product brief

- **Audience:** HP 9000 Series 300 and HP Apollo 9000 Series 4001700 users who need external online and secondary mass storage
- **P/N:** 5091-5181E
- **Description:** Describes new HP Series 6000 SCSI mass storage system with 1- and 2-GB drives that provide external disk storage, 2-8 GB DAT, 600-MB CD-ROM, and 650-MB rewritable optical secondary storage. Product replaces the HP Series 6000 Models 1350SE, 670Se, and 1350S.

HP DIRECT phone numbers

HP's fast-order phone lines provide customers with an easy, direct way to order supplies, accessories, media, furniture, and software from Direct Marketing Organization.

Location	Telephone number*
Argentina	7814061 through 4069
Australia	008 339 861 (toll free)
Melbourne	(03) 272 2861
Austria	(0222) 2500-614 (0222) 2500-615 (0222) 2500-616
Belgium/Luxembourg	(02) 761-31-11
Brazil	(011) 709-1300
Canada	800-387-3154
Toronto	416-671-8383
China	2566888
Denmark	80 30 16 40
Finland	(90)8872-2361
France	(1) 60 77 34 07
Germany	(0130) 3322
Greece	(01) 672-6090
Hong Kong	(5) 8487569
Italy	(02) 9530 1532
Japan	427-59-1321
Korea	7690-600 7690-700 7690-800
Malaysia	(03) 29865.55
Mexico	905-676-7892
Netherlands	(06) 0501
New Zealand	(04) 820400
Norway	(02) 24 41 80
Singapore	279-8824
Spain	(91) 6374013 (91) 6370011
Sweden	(08) 750 24 00
Switzerland	(057) 31 24 90
Taiwan	(02) 7179608
United Kingdom	(0344) 369333
United States	800-538-8787
Venezuela	2394477

*Numbers listed are localized

HP-UX 9.0 products increase performance and ease of use

HP-UX 9.0 is the newest version of the standards-based HP-UX operating system. It offers new features and benefits to workstation users in the areas of performance, ease of use, new hardware and peripherals support, and standards compliance.

HP-UX 9.0 provides a complete, fully functional, easy-to-use operating system that runs currently on the fastest workstations.

The combination of Series 700 workstations and HP-UX 9.0 leads the industry in ease of use, performance, reliability, and quality.

Features and benefits — Performance

- *Dynamic buffer cache* — function performed automatically for reduced concern about optimizing RAM set aside for buffer caching
- *Memory mapped files* — better performance in reading and writing files
- *Higher process virtual address space* — large processes no longer limited to 640 MB
- *Update* — faster system updating

- *Performance tuning* — faster read/write access to NFS-mounted file systems, floating-point libraries, virtual memory, C and FORTRAN compiling and linking, I/O subsystems, and 3D rendering in software

Features and benefits — Ease of use

- *X11 Release 5* — faster X-window performance, new features
- *HP W E 3.0* — improved user interface; VUE Lite for faster startup and less memory consumption; easier customization; Hypertext online help; 3D color icons; color icon editor, new, cleaner dashboard layout
- *Binary compatibility with HP-UX 8.0X* — no change to user applications from HP-UX 8.0 versions
- *New System Administration Manager (SAM)* — easier to use, task-oriented, with new functions and Open Software Foundation™ (OSF)/Motif-based GUI
- *CD-quality audio support* — higher quality sound for multimedia audio applications
- *Update utility* — supports install of HP-UX over network, push capability, support for 7.0X, 8.0X, and 9.0 media types, and fpkg utility for ease of creating update packages

Hardware support

HP-UX 9.0 supports 2-GB 5¼-inch, 1-GB 3½-inch, 525-MB 3½-inch-half-height, and 3½-inch floppy disk drives. It supports the kernel and drivers for disk arrays (HP Apollo 9000 Series 700 only) and data compression software control on P/N A2275A DDS drive (new for HP Apollo 9000 Series 400). Other peripherals supported are magneto-optical drives, low-cost autochangers, and HP color scanners.

Standards compliance

HP-UX 9.0 has OSF Application Environment Specification (AES) compliance, Worldwide Portability Interface (WPI) of XPG4, IEEE 1003.2 and POSIX.2 shell and tools standards, kernel support for Streams, DDS install/update media (new to Series 400/HP 9000 Series 300) support, NFS 4.1 features (export of directories and files, automounter, root access over NFS), and NFS and ARPA services over Apollo Token Ring support.

Configuration information

HP-UX 9.0 can be preloaded along with certain layered software products on Series 700 workstations introduced after September 1.

Open Software Foundation is a trademark of the Open Software Foundation in the U.S. and other countries.



HP-UX 9.0 FORTRAN products ordering changes

The following products have been restructured to offer both 8.07 and 9.0 software versions for HP Apollo 9000 Series 7001400 and HP 9000 Series 300 HP-UX 9.0 release. An Instant Ignition option for Series 700 and a DDS media option for Series 3001400 have been added to the FORTRAN product for Release 9.0.

Ordering information

Product No.	Description
B2408A	FORTRAN license to use for Series 700
Opt. AAH	DDS
Opt. AAU	CD-ROM certificate
Opt. APF	8.07 version
Opt. APH	9.0 version
Opt. OBJ	Additional manuals
Opt. OD1	Factory integration
B2372A	FORTRAN license to use for Series 3001400
Opt. AAO	¼-inch cartridge tape
Opt. AAH	DDS
Opt. AAU	CD-ROM certificate
Opt. APB	8.0 version
Opt. APH	9.0 version
Opt. 0B1	Additional manuals

As of the September HP Price List, software and media type must be specified when placing media orders. For example, to order the Series 700 9.0 version of the FORTRAN product on DDS, order P/N B2408A, Options APH and AAH.

HP Apollo 9000 Series 400 discontinuance

The HP Apollo 9000 Series 400 is being discontinued. The core of the Series 400 product **will** be available until June 1994. Parts of the Series 400 line **will** be discontinued in March 1993, and there **will** be a price increase in December 1992.

The following Series 400 products will be available until June 1, 1994:

- Model 425e diskless, 420 MB with Domain and HP-UX, EVRX color and monochrome

- Model 425t diskless, 420 MB with Domain and HP-UX, CRX color and monochrome
- Model 433s 1.3 GB with Domain and HP-UX, CRX color, monochrome, and server

Suppliers for VRX, PVRX, and TVRX graphics systems and the 200-MB disk drive are no longer available.

The following products will be discontinued as of March 1993.

Product No.	Description	Replacement
A2150A	Model 425e, 210 MB, 16-inch color, 8 MB, Domain, no I/O	A2151A
A2155A	Model 425e, 210 MB, 19-inch color, 16 MB, Domain, no I/O	A2154A
A2146A	Model 425e, 210 MB, 19-inch gray, 8 MB, Domain, no I/O	A2147A
A2135A	Model 425e, 210 MB, 16-inch color, 8 MB, HP-UX, no I/O	A2136A
A2140A	Model 425e, 210 MB, 19-inch color, 16 MB, HP-UX, no I/O	A2141A
A2131A	Model 425e, 210 MB, 19-inch gray, 8 MB, HP-UX, no I/O	A2132A
A2193A	Model 425s, 660 MB, CRX 19-inch, 16 MB, Domain, EISA	A2536A
A2194A	Model 425s, 1.3 GB, CRX 19-inch, 16 MB, Domain, EISA	A2536A
A2190A	Model 425s, 660 MB, GRX 19-inch, 16 MB, Domain, EISA	A2535A
A2125A	Model 425s, 660 MB, PVRX P3, 16 MB, Domain, EISA	none
A2196A	Model 425s, 1.3 GB, PVRX P3, 16 MB, Domain, EISA	none
A2126A	Model 425s, 660 MB, server, 16 MB, Domain, EISA	A2537A
A2199A	Model 425s, 1.3 GB, server, 16 MB, Domain, EISA	A2537A
A2124A	Model 425s, 660 MB, VRX 19-inch color, 16 MB, Domain, EISA	A2536A
A2123A	Model 425s, 660 MB, VRX 19-inch mono, 16 MB, Domain, EISA	A2535A
A1421B*	Model 425s, flex	various
A2116A*	Model 425s, 660 MB, VRX 19-inch mono, 16 MB, HP-UX, no I/O	A2523A
A2117A*	Model 425s, 660 MB, VRX 19-inch color, 16 MB, HP-UX, no I/O	A2526A
A2118A*	Model 425s, 660 MB, VRX 19-inch color, 16 MB, HP-UX, DIO-II	A2527A
A2119A*	Model 425s, 660 MB, PVRX P3, 32 MB, HP-UX, DIO-II	none
A2120A*	Model 425s, 660 MB, TVRX T2, 32 MB, HP-UX, DIO-II	none
A2121A*	Model 425s, 660 MB, server, 16 MB, HP-UX, DIO-II	A2529A
A2180A	Model 425s, 660 MB, GRX 19-inch, 16 MB, HP-UX, no I/O	A2523A
A2181A	Model 425s, 660 MB, GRX 19-inch, 16 MB, HP-UX, DIO-II	A2524A
A2183A	Model 425s, 660 MB, CRX 19-inch, 16 MB, HP-UX, no I/O	A2526A
A2184A	Model 425s, 660 MB, CRX 19-inch, 16 MB, HP-UX, DIO-II	A2527A
A2185A	Model 425s, 660 MB, CRX 19-inch, 16 MB, HP-UX, EISA	A2528A
A2187A	Model 425s, 1.3 GB, PVRX P3, 32 MB, HP-UX, DIO-II	none
A2189A	Model 425s, 1.3 GB, server, 16 MB, HP-UX, DIO-II	A2529A
A2177A	Model 425t, 420 MB, PVRX P3, 16 MB, Domain, no I/O	none
A2110A	Model 425t, diskless, VRX 16-inch color, 8 MB, Domain, no I/O	A2175A
A2111A	Model 425t, diskless, VRX 19-inch color, 8 MB, Domain, no I/O	A2175A
A2174A	Model 425t, 420 MB, VRX 19-inch color, 16 MB, Domain, no I/O	A2176A
A2108A	Model 425t, diskless, VRX 19-inch mono, 8 MB, Domain, no I/O	A2172A

A1630E	Model 425t, flex, no I/O	various
A2167A	Model 425t, 420 MB, PVRX P3, 16 MB, HP-UX, no I/O	none
A2102A	Model 425t, diskless VRX 16-inch color, 8 MB, HP-UX, no I/O	A2165A
A2103A	Model 425t, diskless VRX 19-inch color, 8 MB, HP-UX, no I/O	A2165A
A2164A	Model 425t, 420 MB, VRX 19-inch color, 16 MB, HP-UX, no I/O	A2166A
A2100A	Model 425t, diskless, VRX 19-inch mono, 8 MB, HP-UX, no I/O	A2162A
<i>Upgrades and add-on products</i>		
98753A	19-inch 1,024 x 768 color, monitor	none
98754A	19-inch 1,280 x 1,024 color, monitor	none
A1443A	600-MB disk HP-UX	A2076A
A1444A	600-MB disk Domain	A2076A
A1467A	VME expander	none
A2044A	Upgrade Model 400s to 425s, HP-UX	A2042A
A2045A	Upgrade Model 400s to 425s, Domain	A2043A
A2080A	Upgrade Model 400s to 425s, with CRX	none
A2071A	210-MB, disk	A2072A

**Instant Ignition for these products will continue to be HP-UX 7.05 through the March discontinuance.*

Domain DN Series discontinuance update

The following two products **will** be discontinued in June 1993 rather than December 1992 as previously announced. There are no replacements.

Product No.	Description
A1631A	Upgrade 25-MHz MC68040 for DN3500/4500
A-697E*	Single expansion module with 697-MB disk

There is no change (still December 1992) for discontinuance of the rest of the A-697* products.

The 8-mm tape products were not on the original list because they also work on HP Apollo 9000 Series 400 Domain systems; but these two products **will** be discontinued in June 1993 with the rest of the DN-specific peripherals. The

replacement product for both is P/N C1520B.

Product No.	Description
A-EX-"	8-mm drive in a single disk expansion module
A-OBEX-"	8-mm drive including LA43A-B0C/B0D

Two families of products, the Intelligent Communication Controller and parallel interface kit, were listed for June 1993 discontinuance. Some versions are needed on Series 400. To simplify the products being produced, HP **will** discontinue the versions of these products with software on 5-inch floppies in December 1992. The other versions with software on M-inch tape **will** be offered after June 1993. The following products **will** be discontinued in December 1992.

Product No.	Description	Replacement
SCAT10**B	Intelligent Communications Controller	SCAT10**D
KIT-CENT-PC	Field-installed parallel interface kit	KIT-CENT10C
KIT-CENT-IOH	Parallel interface kit software on 5-inch floppy	KIT-CENT10C
KIT-CENT-MB	Parallel interface kit for MULTIBUS	None

The following products **will** be discontinued after June 1993. There are no replacements.

Product No.	Description
SCAT10**D	Intelligent Communications Controller
KIT-CENT-10C	Parallel interface kit software on 1/4-inch tape

*"Letters designating different country kits
 ""Various versions*

**also
 in this
 issue**

- New HP OmniBack release adds functionality 12
- Introducing HP GlancePlus Pak/UX for HP 9000 systems 14
- HP LaserRX/UX enhancements and repricing 15

New A-Series integrated peripheral tray

Hewlett-Packard is announcing a new integrated peripheral tray (P/N 12123A) for the HP 1000 to replace P/N 12122A. The new peripheral tray consists of a 422-MB hard disk and an optional 2.0-GB DAT tape drive. The package will integrate into any HP 1000 A-Series computer that is in a 14-slot box. The new peripheral tray will connect to the HP 1000 via a dedicated interface (P/N 12016A), which must be ordered separately.

The tray provides a complete integrated system with a high-capacity disk drive and compact backup and software load device. All HP 1000 software products are available on DAT tape by specifying Option AAH. Both the DAT tape and the hard disk drive are supported HP 1000 startup devices. The new integrated peripherals are all supported using HP RTE-A Revision 5.27.

Ordering information

Product No.	Description
12123A	HP 1000 A-Series integrated peripheral tray for 14-slot card cage with 422-MB hard disk; requires a dedicated SCSI interface (P/N 12016A) that must be purchased separately
Opt. 001	Replace 422-MB disk with 234-MB disk
Opt. 002	Add 2.0-GB DAT (DDS) tape drive

The required SCSI card may be ordered either as P/N 12016A or by specifying Option ALM when ordering a 2X8X HI 1000 system product.

HP 1000 cabinet and racking hardware price changes

Prices for HP 1000 cabinet and racking hardware products listed below have been increased.

Changes to the 20- and 14-slot boxes make it possible for HP 1000 system products to comply with FCC/VDE radio frequency interference requirements without being rackmounted in one of the cabinets. Exceptions are A900 processors in 20-slot boxes, which must still be rackmounted in either P/N 29429A or 29431G cabinets to meet FCC and VDE requirements. The purchase of a cabinet with the A400, A600, or A990 is no longer required.

Product No.	Description
29431G	720-mm cabinet
29429A	56-inch cabinet
12679B	Support rail
12679C	Support rail
12680B	Blank panel
12681B	Blank panel
12682B	Blank panel
126838	Blank panel
12684B	Blank panel
12685B	Blank panel
29402C	56-inch cabinet
40025A	Vertical floor mount
40026A	Tie together kit

Updated ordering instructions for HP 1000 SCSI interface

Because the HP RTE-A Revision 5.27 includes all of the software required to operate the HP 1000 SCSI interface (P/N 12016A), ordering a software option for this SCSI interface is no longer required. Because of this, Option 100 (delete software and manuals for the HI 1000 SCSI interface, P/N 12016A) has been removed from the October HP Price List.

Ordering information

Product No.	Description
12016A	SCSI interface; includes single-ended SCSI cable and terminator; supports up to 7 devices; if software is required Opt. 022 or 051 may also be ordered
Opt. 001	Differential cable; replaces single-ended cable and terminator with differential cable
Opt. 022	Software on CS-80 cartridge tape media
Opt. 051	Software on 9-track 1600-cpi magnetic tape media

Introducing HP Vectra 486N PC series

The recently introduced range of small, powerful HP Vectra 486N PCs — the 486/25N, 486/33N, 486/50N, and 486/66N — are affordable 486 PCs with excellent system performance and network capabilities for advanced office users on a LAN. The PCs combine processor speeds from 486SX 25 MHz to 486DX2 66 MHz, with graphics accelerator, enhanced security, and built-in network capabilities. They are ideal for professionals in connected offices including financial and marketing analysts.

Features and benefits

- *25-MHz to 66-MHz Intel486™ processors* — offer a choice of performance and price
- *Built-in Ultra-VGA graphics accelerator and drivers* — provide a combination of video hardware and software that gives performance suitable for graphic environments such as Windows and provides ergonomic video modes to minimize eye strain
- *Ethernet and Token Ring models and built-in boot ROM* — provide a complete solution for multi-vendor networking and allow PCs to start up from an Ethernet or Token Ring-based server using Novell NetWare, MS Lan Manager, or IBM LAN Server

- *Universal socket for upgrading to any Intel486 processor from 486 SX25 to 486 DX2/66* — protects user investment with dual-level security including administrator and user password; protection for PC configuration, disk drives, and parallel ports; keyboard/mouse lock and screen-blanking set by control panel or by built-in time; protected power switch and reset button; security features that protect against unauthorized access to the PC
- *Error utility in ROM* — provides diagnosis of PC start up problems; makes PC more serviceable
- *Online PC tutorial* — helps users to learn about their PCs
- *MS-DOS, MS-Windows, and HP Dashboard integrated in all hard disk models* — reduces PC set-up time (HP Dashboard is a utility to manage applications, peripherals, and memory usage under MS-Windows; available November 1.)

Product line positioning

HP Vectra 486N PC provides a high-performance alternative to the HP Vectra 386N PC for demanding application use in networked environments. Users who want 486 performance have a choice between the HP Vectra 486U and 486N PC.

HP Vectra 486U PC is for users looking for greater expandability for use as a server and higher performance levels offered by external cache for applications such as CAD. HP Vectra 486N PC is ideal for price-sensitive users who have limited need for expandability or who use their LAN servers for high mass-storage capacity and backup.

HP Vectra 486N PC is optimized for the advanced office user connected to a LAN. The PC provides a combination of graphics and system performance with networking and security features.

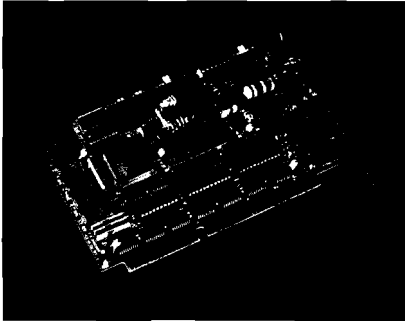
Ordering information

Product No.	Description
D2510A	HP Vectra 486/25N PC Model 0, diskless model
D2511A	HP Vectra 486/25N PC Model 1, 1.44-MB floppy, no hard disk
D2512A	HP Vectra 486/25N PC Model 80, 1.44-MB floppy, 85-MB hard disk, MS-DOS, Windows, and mouse included
D2513A	HP Vectra 486/25N PC Model 170, 1.44-MB floppy, 170-MB hard disk, MS-DOS, Windows, and mouse included
D2514A*	HP Vectra 486/25N PC Model 80T, 1.44-MB floppy, 85-MB hard disk, 16-bit, Token Ring ISA 16/4 LAN adapter included
D2515A	HP Vectra 486/25N PC Model 80E, 1.44-MB floppy, 85-MB hard disk, 16-bit, Ethernet LAN adapter, MS-DOS, Windows, and mouse included
D2520A	HP Vectra 486/33N PC Model 0, diskless model
D2521A	HP Vectra 486/33N PC Model 1, 1.44-MB floppy, no hard disk
D2522A	HP Vectra 486/33N PC Model 80, 1.44-MB floppy, 85-MB hard disk, MS-DOS, Windows, and mouse included

*Models with Token Ring are available November 1, 1992

Intel486 is a U.S. trademark of Intel Corporation

HP introduces Token Ring solutions for HP Vectra PCs



HP is reinforcing its commitment to multivendor connectivity with the introduction of three HP Vectra PCs — the 386/25N Model 80T, 486/25N Model 80T, and 486/33N Model 80T (P/Ns D2497A, D2614A, and D2624A) — with factory-installed Token Ring adapters, as well as a standalone HP ISA 16/4 Token Ring adapter (PIN D2378A).

These PCs are ideal for IBM users migrating from the traditional hierarchical mainframe/terminals IBM SNA architecture to a client/server Token Ring-based environment, or users who have already standardized on Token Ring.

Features and benefits

- **Full IBM interoperability** — supports direct connection to a wide range of IBM communication products and departmental computers, is fully IBM Token Ring network-compatible, and can be mixed freely with IBM or other suppliers' Token Ring adapters in a Token Ring network

- **Full compatibility** — provides extensive network operating systems support (Novell NetWare, Microsoft Lan Manager, IBM LAN Server, and IBM PC LAN) and standard drivers (NDIS, ODI, and DLC)
- **Top performance** — comes from optimized drivers, a superior transfer rate due to bus master DMA mode, and 128 KB of memory on the network adapter
- **Easy and flexible setup** — provides user-friendly documentation, integrated installation programs, easy-to-access switches to select elements such as 16 MB/s or 4 MB/s network speed, and shielded or unshielded twisted pair, STP or UTP, cabling connection, and the HP-designed multiprotocol boot ROM. The HP Vectra PC boot ROM supports remote boot on Novell NetWare, Microsoft Lan Manager, and IBM LAN Server networks on either Ethernet or Token Ring topologies. The boot ROM is standard on all HP Vectra 486N PCs and on LAN models of the HP Vectra 386/25N PC. It is available in six packs as an accessory for the HP Vectra 386N PC (P/N D2407B)
- **Added flexibility** — is supported on HP Vectra 386N PC series, HP Vectra 486N PC series, HP Vectra 386s/20, and 386s/25 PCs

Ordering information

Product No.¹	Description
D2378A	HP ISA 16/4 Token Ring adapter
D2497A	HP Vectra 386/25N PC Model 80T
D2614A	HP Vectra 486/25N PC Model 80T
D2624A	HP Vectra 486/33N PC Model 80T

¹When ordering any of the HP Vectra PC Token Ring models, specify a language option. For the accessory, only language Option ABA exists.

P/Ns D2378A and D2497A are available October 1 and P/Ns D2614A and D2624A are available November 1.



New HP Vectra 486/33ST and 486/66ST PCs to replace HP Vectra 486/33T PC

Effective December 1, HP will discontinue the HP Vectra 486/33T PC. **All** models of the HP Vectra 486/33T PC (P/Ns D2236A, D2237A, D2238A, D2239A, and D2240A) will be discontinued at this time.

The HP Vectra 486/33ST PC is a direct replacement for HP Vectra 486/33T PC. With the

introduction of HP Vectra 486/33ST and 486/66ST products, users can buy a higher performance PC with greater expandability and lower price than the HP Vectra 486/33T PC.

Orders will be accepted for the HP Vectra 486/33T PC through December 31.

Product No.	Description	Replacement
D2236A	HP Vectra 486/33T PC Model 1	P/N D2635A, HP Vectra 486/33ST PC Model 1
D2237A	HP Vectra 486/33T PC Model 1	P/N D2635A, HP Vectra 486/33ST PC Model 1
D2238A	HP Vectra 486/33T PC Model 170	P/N D2636A, HP Vectra 486/33ST PC Model 240
D2239A	HP Vectra 486/33T PC Model 440	P/N D2637A, HP Vectra 486/33ST PC Model 430
D2240A	HP Vectra 486/33T PC Model 1000	P/N D2638A, HP Vectra 486/33ST PC Model 1000

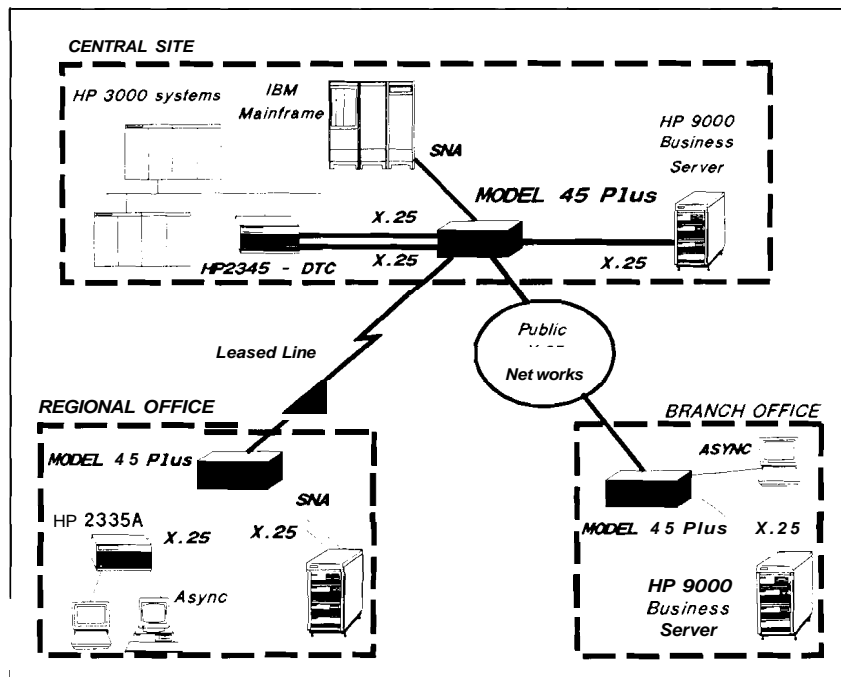
**also
in this
issue**

New HP OmniBack release adds functionality **12**

Localized language products for printers, PCs, and terminals **31**

Two-button mouse discontinuance **32**

New HP Model 45 Plus



The HP Model 45 Plus is a multiprotocol concentrator that performs better, costs less, and is fully compatible with the HP Model 45.

Features and benefits

- *Increased number of ports* — with two new models: HP Model 45 Plus/18P from 6 to 18 synchronous ports; HP Model 45 Plus/30P from 6 to 30 synchronous ports
- *Increased connectivity* — with wider choice of new physical interfaces like V.35, X.21, and KS-449
- *Higher IBM SNA/SDLC performance* — with full support of SNA permanent virtual circuits and SNA/SDLC throughput up to 64 KB/s with SDLC frame up to 4,105 bytes

- *Higher reliability* — with a new mean time between failure of 35 years
- *Complete compatibility* — between the four-port line processor card and the new six-port advanced line processor card. The new six-port ALP card can be installed on the previous HP Model 45 platforms (P/N J200XA) at the condition that a four-port LP card remains plugged into the HP Model 45 (P/N J200XA)
- *High performance* — with one RS-449 or X.21 single link up to 1.5 MB/s with 512 KBps of aggregate throughput per ALP card; up to 1,200 packet per second on 18-port model, and 2,000 pps on 30-port model
- *Full satellite links performance* — with increased packet size up to 1,024 bytes

- *HP OpenView Switch/PAD Manager management* — for managing HP DTCs, hubs and bridges, systems, PADs (P/N 2335A), and Model 45s from the same central network management platform
- *Customer installable*

Ordering information

Product No.	Description
HP Model 45 Plus/18-ports version	
J2000B	HP Model 45 Plus, six ports
J2004B	Additional six-port ALP card, maximum two
J2007B	Monitor package, optional
J2030A	RS-232 MAP cable, six RS-232 ports
J2031A	V.35 MAP cable, two V.35/four RS-232 ports
J2032A	X.21 MAP cable, two X.21/four RS-232 ports
J2033A	RS-449 MAP cable, two RS-4491 four RS-232 ports
HP Model 45 Plus/30-ports version	
J2001B	HP Model 45 Plus, six ports
J2004B	Additional six-port ALP card, maximum four
J2007B	Monitor package, optional
J2030A	RS-232 MAP cable, six RS-232 ports
J2031A	V.35 MAP cable two V.35/four RS-232 ports
J2032A	X.21 MAP cable, two X.21/four RS-232 ports
J2033A	RS-449 MAP cable, two RS-4491 four RS-232 ports
HP Model 45 to HP Model 45 Plus conversion kit	
J2005B	Conversion kit from HP Model 45 to Model 45 Plus includes one ALP six-port card, software, and manuals ²

¹ When ordering P/N J2005B, order one MAP cable (P/N J2030A, J2031A, J2032A, or J2033A).

² P/N J2005B conversion kit can be installed on the previous HP Model 45 platforms (P/N J200XA) when a four-port LP card remains plugged in the P/N J200XA.

Support services

Support services prices for P/Ns J2000B/J2001B/J2004B are identical to the support prices of the HP Model 45 (P/Ns J2000A/J2001A/J2004A). There is no specific support service for the MAP cable (P/N J203XA). The support services for P/Ns J2004B/J2005B include the

full connectivity — ALP card and the MAP cable. Support prices for P/Ns J2004B/J2005B are the same.

Discontinuance

Effective November 1, 1992, the HP Model 45 (P/N J200XA) will be discontinued.

Product No.	Description	Replacement
J2000A	PPN Model 45, low end	J2000B
J2001A	PPN Model 45, high end	J2001B
J2004A	Four-port MP BD	J2004B
J2006A	Four-port asynchronous assembly	J2004B ¹
J2007A	Monitor/keyboard kit (MMA interface plus MMA monitor and keyboard)	J2007B (VGA monitor and keyboard)
J2008A	Four DTE cables	MAP J2030A ²
J2009A	Two DTE and two DCE cables	MAP J2030A ²
J2010A	Four DCE cables	MAP J2030A ²
J2011A	Three DTE and one DCE cables	MAP J2030A ²
J2012A	One DTE and three DTE cables	MAP J2030A ²

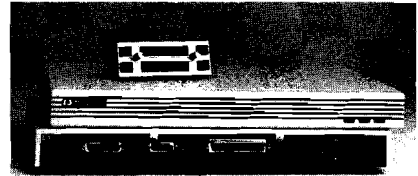
¹ ALP card provides both synchronous and asynchronous communication — three ALP cards are supported into P/N J2000B and five ALP cards are supported into P/N J2001B.

² The MAP provides RS-232, V.35, X.21, or RS-449 interfaces.

The 4-port LP card is not supported on the HP Model 45 Plus (P/N J200XB).



New HP EtherTwist Hub provides easy upgrade path



An upgradable HP EtherTwist 12-port, 10Base-T hub — the HP EtherTwist Hub/12 (P/N 28684B) — is now available. This product is an unmanaged 12-port hub with the ability to become a managed hub. Also available is the HP EtherTwist Management upgrade kit (PIN J2351A), a separate upgrade kit that can be added at any time to provide network management functionality equivalent to that of HP EtherTwist Hub Plus (P/N 28688B).

Features and benefits

HP EtherTwist Hub/12:

- 25-pin RS-232-C console port
- 15-pin AUI port
- BNC port
- Standard 50-pin Telco connector for the 12 10Base-T ports
- 12-port, RJ-45 modular adapter option — may be installed on the standard 50-pin Telco connector to connect 12 RJ-45 unshielded twisted-pair ports to the HP EtherTwist Hub/12

continued on next page

HP EtherTwist Management upgrade kit:

- Ability to respond to requests from the HP OpenView Network Management Station
- Backup link support — enhances network fault tolerance (a configurable, automatically activated redundant connection)
- Internet Protocol (IP) parameter configuration — allows the hub to be accessible using IP
- PING test capability — tests the link between the hub and a second connected device that responds to IP packets
- Password-setting capability — prevents unauthorized access of the hub from network management stations
- Embedded advanced sampling environment (EASE) functionality — allows the hub to perform trend analysis using embedded instrument technology
- IP or IPX simple network management protocol management capability

The upgrade procedure involves a software download (to the FLASH EEPROM firmware resident on the HP EtherTwist Hub/12) via the RS-232-C console port. The upgrade kit provides the software download and a unique password for each hub that is to be upgraded. Unlike most vendors that require additional hardware or in some cases an additional hub to upgrade their solutions to support network management, the HP EtherTwist upgrade does not require hardware additions.

The upgrade kit also includes.

- 5¼- and 3½-inch floppy disks with upgrade code
- Installation guide
- Null modem adapter
- Password certificate — This is serialized. To obtain the unique password, the certificate must be completed and returned to HP per the instructions. The password serves as a key enabling the network management capability to be downloaded from floppy disk to hub.

HP NetLS on HP-UX 7.0 discontinuance

With the HP-UX 9.0 release, HP Network License System (NetLS) HP-UX 7.0 for HP 9000 Series 300/800 (P/N LA350H0E) will be obsoleted on the November HP Price List.

Users can still purchase NetLS on HP-UX 8.0/9.0. Contact your HP representative for more information.

Product No.	Description
B2144A	NetLS on HP-UX 8.0/9.0 for HP Apollo 9000 Series 700
B2677A	NetLS on HP-UX 8.0/9.0 for HP 9000 Series 300/HP Apollo 9000 Series 700
B2678A	NetLS on HP-UX 8.0/9.0 for HP 9000 Model 6451835
LA350BAD	NetLS for Motorola, Prism, Domain/OS
LB42K000	NetLS annual license generation rights

also
in this
issue

Introducing HP Vectra 486N PC series	25
HP introduces Token Ring solutions for HP Vectra PCs	26

General

Refurbished HP disk drives, tape drives, and upgrades price reduction

For U.S., Canada, and Asia Pacific only

HP's Finance and Remarketing Division **will** reduce prices up to 54% November 1 on the following remanufactured peripheral products: disk drives, tape drives, and upgrade kits. Products listed can be shipped within two weeks. Price changes **will** be on the November HP Price List. Contact your HP representative for more information.

Product No.	Description
C1512AR	1.3-GB ODS format tape drive
C2212AR	322-MB SCSI disk mass storage system
Opt. 001	Add 332-MB 5%-inch disk drive
Opt. 005	Add 650-MB rewritable optical disk drive
C2213AR	664-MB SCSI disk mass storage system
Opt. 001	Add 332-MB 5%-inch disk drive
Opt. 002	Add 664-MB 5%-inch disk drive
Opt. 005	Add 650-MB rewritable optical disk drive
C2213DR	664-MB SCSI disk mass storage system
Opt. 005	Add 1.3-GB digital audiotape drive
Opt. A01	Add 332-MB 5%-inch disk drive
C2290AR	332-MB SCSI disk upgrade kit
C2291AR	664-MB SCSI disk upgrade kit
C2294AR	650-MB rewritable optical upgrade kit
7937FLR	571-MB fiber-optic disk
7937HR	571-MB disk drive
7937XR	571-MB disk drive with controller cache
19514AR	1.6-meter disk drive cabinet for up to eight P/N 7937 drives
7979AR	1600-cpi autoloader %-inch tape drive
7980XR	6250/1600 extra-capacity ½-inch drive

Limited supply of refurbished peripherals

For U.S., Canada, and Asia Pacific only

The following HP mass storage products may soon be out of supply. The short supply products, available from HP's Finance and Remarketing Division, are ready for quick shipment. Supplier response time varies from one to two weeks. Check with your HP representative for more information.

Product No.	Description
9153C	
Opt. 040	40-MB 3%-inch hard disk drive with integrated 2-MB 3%-inch flexible disk
9144AR	¼-inch cartridge 16-track tape drive
9145AR	%-inch cartridge 32-track tape drive
C1511AL	New 1.3-GB HP-IB digital audiotape drive

Localized language products for printers, PCs, and terminals

HP's Localization Engineering Center (LEC) offers add-on products for printers, PCs, and terminals to process data in Arabic, Bulgarian, Croatian, Czech, Greek, Hebrew, Hungarian, Polish, Romanian, Russian, Slovak, Slovene, or Turkish.

Ordering information

East Central Europe (ECE) languages include Czech, Croatian, Hungarian, Polish, Romanian, Slovak, and Slovene. Cyrillic includes Russian and Bulgarian.

Product No.	Description
HP LaserJet Series II printer family	
<i>Cyrillic-based fonts</i>	
B1221A	Times Roman™font cartridge
B1222A	Courier font cartridge
B1225A	Times Roman/Helvetica™ soft fonts
<i>ECE languages-based fonts</i>	
B1223A	Times Roman/Helvetica font cartridge
B1224A	Courier/Lineprinter font cartridge
B1226A	Times Roman/Helvetica soft fonts
HP LaserJet IIP Plus printer	
<i>Cyrillic-based fonts</i>	
B2544A	
Opt. ACB	Courier/Lineprinter font cartridge
<i>ECE languages-based fonts</i>	
B2544A	
Opt. AKG	Courier/Lineprinter font cartridge
HP LaserJet Series III printer family	
<i>Cyrillic and ECE languages</i>	
B2536A	CG Times/Univrs/Courier/Lineprinter font cartridge
HP DeskJet printer family*	
<i>Cyrillic and ECE languages-based fonts</i>	
B1228A	
Opt. AAH, AKG	Courier/Lineprinter font cartridge
Opt. AAA, ACB	Times Roman/Helvetica soft fonts
B2543A	
Opt. ACB	CG Times Roman/Courier/Lineprinter font cartridge
HP Vectra PC family	
B1227A	Cyrillic/Latin keyboard
B1281A	Multilingual supplement MS-DOS 3.2 or higher
Opt. OJT	For non-HP Vectra PCs
B1282A	Multilingual supplement MS-Windows 3.0
HP 256XC printers	
B1283A	High-performance upgrade kit, draft mode
Opt. ACB	For Cyrillic
Opt. AKG	For ECE languages

continued on next page

HP terminals

HP 700/60

B2542A	Multilingual upgrade kit
Opt. AKB	Czech version
Opt. AKC	Hungarian version
Opt. AKD	Polish version
Opt. AKE	Romanian version
Opt. AKN	Slovenian version
Opt. AKP	Croatian version
Opt. AKR	Slovak version
Opt. AKS	Bulgarian version
Opt. AKT	Cyrillic version

HP 700/92-94

B2540A	Multilingual upgrade kit
--------	--------------------------

**HP DeskJet printer family soft fonts require an additional P/N 227078 RAM cartridge.*

Times Roman and Helvetica are trademarks of Linotype AG and/or its subsidiaries in the U.S. and other countries.

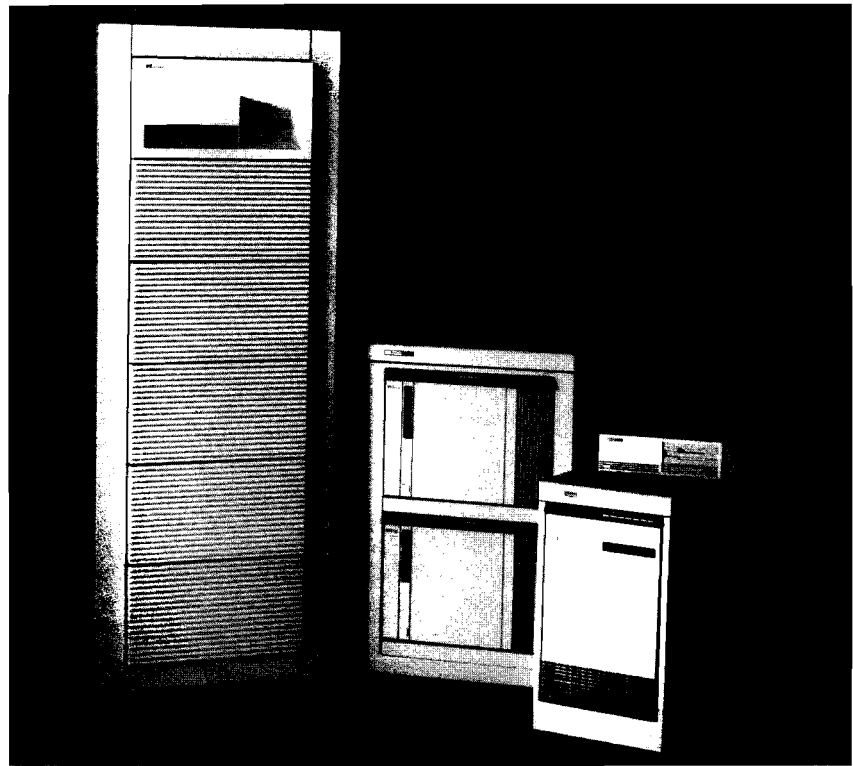
Two-button mouse discontinuance

The HP mouse (P/N 46060A) **will** be discontinued and removed from the April 1993 HP Price List. The mouse is a hand-held pointing device with the HP-HIL interface.

Orders **will** be accepted through April 30, 1993, and the product **will** have a five-year support life. There is no replacement product.

Mass Storage

New HP high-performance optical drive



HP optical disk storage products are now available with the new HP-designed and manufactured high-performance optical drive. The new drive, which features better access times and faster transfer rates, significantly improves the performance and reliability of the entire family of optical disk storage products. It uses standard magneto optical disks and is forward and backward compatible with current drives.

Optical disks are inherently rugged and can withstand high levels of shock and vibration. The performance now available positions the new drive as an excellent solution for removable hard-disk applications, especially in rugged environments.

The new drive is available in Model 650C standalone drive, new Model 10LC desktide library, and Model 20C, 60C, and 100C libraries. HP **will** continue to offer the current optical products for systems that do not support the new products.

Features and benefits

- *Improved library performance* — faster transfer rate and access time improve time to data
- *Improved reliability* — products designed for the rigors of library operation
- *100% media compatible* — industry-standard disks 100% usable
- *Rewritable or write-once operation* — permanent or rewritable
- *Data storage*

Description	Old drive	New drive	Improvement
Access time (ms)	104	35	3X
Maximum transfer rate			
Read (KB/s)	340	500	1.5X
Write (KB/s)	680	1,000	1.5X
Load/unload times (seconds)	10	4.5	2X
MTBF (hours)	25,000	40,000	1.5X

Support

The Models 650C, 10LC, 20C, 60C, and 100C optical products are supported on HP Apollo 9000 Series 700 and HP 9000 Series 800 systems at HP-UX Release 9.0 (except Models 705 and 710). The Model 650C is also supported on HP Apollo 9000 Series 700 systems under HP-UX 8.07.

A trade-in program (promotion number 2.671) will be available for users who wish to trade in their existing library for a new "C" version. Such trade ins are only necessary when users wish to improve performance. Contact your HP representative for more information on this promotion.

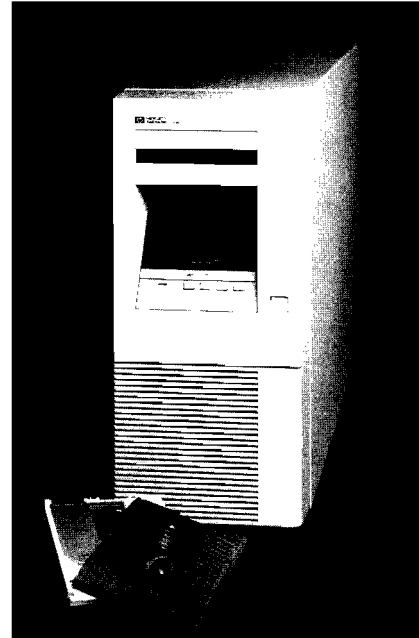
New Product No.	Trade in Product No.
C1700C, Model 20C	C1703A, C1700A/M
C1704C, Model 60C	C1703A, C1700A/M, C1704A/M
C1705C, Model 100C	C1703A, C1700A/M, C1704A/M, C1705A/M

Ordering information

HP high-performance optical products are available at prices that were reduced up to 20% on October 1.

Product No.	Description
C1701C	Model 650C standalone drive with 1 disk and 1 drive
C1708C	Model 10LC 10.4-GB desk-side library with 16 disks and 1 drive
C1700C	Model 20C 20.4-GB library with 32 disks and 2 drives
C1704C	Model 60C 57.2-GB library with 88 disks and 4 drives
C1705C	Model 100C 93.64-GB library with 144 disks and 4 drives

New HP Model 10LC optical library



The HP Model 10LC optical library (P/N C1708C) is an entry-level library solution for small networks that provides low-cost online storage for applications such as image management, hierarchical storage, and unattended backup. The library includes one high-performance optical drive and has capacity for 16 rewritable or write-once disks, providing 10.4 GB of online storage.

Scanned images, maps, engineering test data, and billing records are examples of data that needs to be retrieved in seconds, not milliseconds. The Model 10LC is the solution for these kinds of applications — for much less than a hard disk solution.

continued on next page

The HP Model 10LC is fully compatible with HP's other drives and library products and complies with accepted industry standards for magneto-optical disk interchange.

Ordering information

Product No.	Description
C1708C	HP Model 10LC 10.4-GB optical library, 1 disk drive, 16-disk capacity (includes one disk; does not include SCSI cable)
Opt. 105	Tower configuration
Opt. 241	Add 16 rewritable disks
Opt. 242	Add 16 write-once disks

New HP optical disk 30-year warranty

HP rewritable and write-once optical disks offer an archival life expectancy of 30 years based on accelerated life testing. The optical disks carry a 30-year limited warranty. The warranty covers defects in materials and workmanship for 30 years from the date of purchase.

Product No.	Description
92279A	HP rewritable optical disk, 512 bytes/sector
92280A	HP rewritable optical disk, 1,024 bytes/sector
92289A	HP write-once optical disk, 512 bytes/sector
92290A	HP write-once optical disk, 1,024 bytes/sector

Printers

Introducing HP 2300/840L line printer



Hewlett-Packard introduced the HP 23001840 line impact printer (P/N C2354A) at the INTEREX show in New Orleans, Louisiana. The HP 23001840 is a 54 dbA 840 line-per-minute (lpm) line impact printer for medium-/high-volume printing and departmental and network environments.

The new printer replaces the HP 2564C 840-lpm model currently a member of the 256XC family of HP line impact printers. It features a new parchment white color that coordinates with HP LaserJet printer products and provides a clear window for checking printer output.

Features

- *Location adaptability* — new LCD 16 x 2 display that contains descriptive messages and instructions in five languages: English, German, French, Italian, and Spanish; front panel keypad that is easily localized with the use of overlays

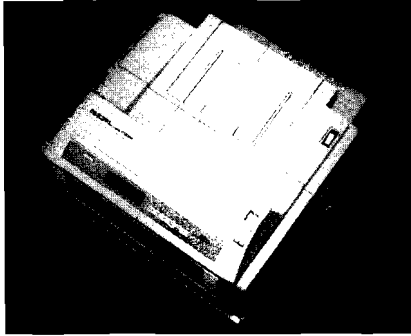
- *Power supply* — four-position, switch-selectable power supply for all voltage levels ranging from 90 VAC to 264 VAC at either 50 or 60 Hz
- *New sound enclosure* — reduces the noise level and allows paper to be stacked at the back of the printer
- *Improved connectivity* — features the following interfaces: HP-IB (direct channel only), Centronics, Centronics and Printronix P-Series emulation, Serial RS-232-C, Serial RS-422-A, Dataproducts Long Line (OEM only), and Dataproducts Short Line (OEM only). The combination of either RS-232-C or RS422-A with Centronics in one interface will be available January 1993 under the name Double I/O. Networks will also be supported after January 1993 by a TCP/IP on HP-UX interface.
- *Standard character sets* — add capabilities and flexibility: Roman 8, size 10, 12, 15, and 16.7 characters per inch (cpi); Roman 8, 10-cpi near letter quality; barcodes; high-speed 10-cpi Roman 8; high-speed 10-cpi USASCII; and Postnet, the U.S. Postal Service barcode.

Ordering information

The HP 23001840 line printer represents a major step in price performance as it comes fully loaded with character sets, has more connectivity options, and has a lower basic unit price than that of P/N 2564C.

Introducing HP Asian laser printer

For Asia Pacific only



On October 1, Hewlett-Packard announced the HP Asian laser printer (P/N C1208A). This 16-page-per-minute (ppm) laser printer for HP 3000 and 9000 system users who need Asian languages in their output. It features four different languages, high speed, and various paper handling.

Features and benefits

- *Asian font cartridges* — allows users to print application outputs in their own language: Japanese, Traditional Chinese, Simplified Chinese, and Korean
- *Various sizes of paper handling* — allows the use of A3-size, EM-size, and ledger-size paper in addition to A4-letter-size paper; allows the use of A3-size paper to print the output from a computer-aided design application; allows application outputs designed for continuous paper to easily migrate to cut sheet paper

- *High-speed printing* — prints application outputs up to 16 ppm; uses RISC processor to improve the throughput of complex documents
- *300-dpi print quality* — offers high-quality output with a newly designed print engine that realizes sharp printing for Asian characters and graphics
- *Printing features* — include eight built-in scalable typefaces and 18 bitmapped fonts; support font scaling, font rotation, multiple print direction, raster data compression, area fill, soft font downloading, and HP-GL/2 vector graphics; for Asian characters, support character magnification, rotational printing, Amigake, and soft font downloading
- *Optional SIMM memory* — allows users to add up to 16 additional megabytes of memory to the standard 3 MB
- *P/Ns C1200A/C1202A Asian printer compatibility* — lets users replace current HP Asian dot matrix printer with minimum change on their applications

System support

Support on HP-UX is available on Release 8.0 or later for HP 9000 Series 800, Release 8.07 or later for HP Apollo 9000 Series 700, and Release 8.03 or later for HP Apollo 9000 Series 400. Support on MPE/iX is planned in early 1993.

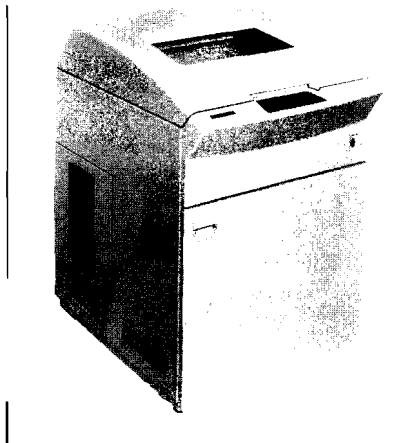
Ordering information

The HP Asian laser printer (P/N C1208A) will be sold in Japan, Korea, and Taiwan only.

Product No.	Description
C1208A	HP Asian 16-ppm laser printer
Opt. OE2	100–120 VAC, 50/60 Hz power operation
Opt. OE3	220–240 VAC, 50/60 Hz power operation
Opt. AB1	Korean localization
Opt. ABJ	Japanese localization
C1209A	1 MB SIMM memory
C1210A	4 MB SIMM memory
C1211A	Japanese Minchdfont cartridge
C1212A	Japanese Gothic font cartridge
C1213A	Traditional Chinese Mincho font cartridge. 40 x 40
C1214A	Traditional Chinese Mincho font cartridge, 32 x 32
C1215A	Simplified Chinese Song font cartridge, 36 x 36, 32 x 32
C1216A	Process cartridge
C1217A	Toner cartridge
C1218A	Fuser unit
C1219A	250-sheet paper tray

High-end HP Asian system line printer

For Asia Pacific only



The HP Asian 600-lpm line printer (P/N C1205A) is an extension to the HP Asian high-performance system printer family. It is ideal for users who need to produce a high volume of copies (vouchers/slips printing and program listing) in less time for EDP.

The HP Asian 600-lpm line printer is capable of printing Asian characters at speeds of up to 600 lpm in near-letter quality. It offers a high-performance printing solution for HP's computer systems in Asia. Users in Asia now have a choice of two line printers — the P/N C1200A and the new P/N C1205A.

Features and benefits

- **High performance** — 600 lpm is the most significant performance feature in Asian character printing capability.
- **New support of BIG5 and CNS for traditional Chinese** — Users can choose one of three encodings during printer setup: BIG5, CNS, and CCDC.
- **Compatibility with P/N C1200A** — P/N C1205A software is compatible with the P/N C1200A printer. P/N C1200A users can easily migrate to the HP C1205A.

Ordering information

Product No.	Description
C1205A	Asian 600 lpm line printer
Opt. 0E2	100–120-V power
Opt. 0E3	200–240-V power
Opt. ABO	Traditional Chinese
Opt. AB1	Korean
Opt. AB2	Simplified Chinese
Opt. ABJ	Japanese
C1206A	Ink ribbon

HP LaserJet printer bitmapped soft fonts discontinuance

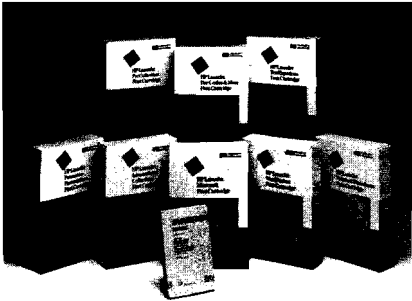
Effective December 1, the last of the HP LaserJet printer bitmapped soft fonts and a font management utility **will** be discontinued.

Product No.	Description
334078	FontLoad, 5%-inch disk
33412DA	Presentations/Letter Gothic soft font, 5%-inch disk
33412DC	Presentations/Letter Gothic soft font, 5%-inch disk
33413DC	Presentations/Letter Gothic soft font, 3%-inch disk
33412EA	Prestige Elite soft font, 5%-inch disk

Stock adjustments and orders can be made through December 31, 1992.

There are no direct replacements for these products, but they **will** be available through HP FAST (503-750-2407), HP's build-to-order service for low-volume and other special type products. HP FAST manufactures soft fonts and font cartridges such as the old P/N 92286A-Z fonts when a user places an order. HP FAST offers a special discount to authorized HP dealers.

New environmental packaging for HP LaserJet printer-type products



HP LaserJet printer-type accessories **will** exhibit new environmental packaging. The old plastic and cardboard clamshells that could not easily be recycled **will** be replaced by recyclable cardboard boxes. The new boxes are printed with vegetable-based inks and made from 100% recycled fibers with a minimum of 35% post-consumer waste. PostScript™ products, Type Director 2.5, and memory boards **currently** come with this type of packaging. The brightly colored new boxes for HP bitmapped font cartridges and scalable typeface cartridges **will** appear by the end of the year.

Postscript is a trademark of Adobe Systems Incorporated which may be registered in certain jurisdictions.

HP LaserJet printer SIMM memory price reduction

SIMM memory prices for the HP LaserJet III Si printer have been reduced by 36–40%. Standard price protection applies. Contact your HP representative for more information.

Product No.	Description
C2063A	1-MB SIMM
C2065A	4-MB SIMM
C2066A*	8-MB SIMM

**For HP LaserJet III Si printers, serial number 3200 or higher.*



Fraudulent toner activity

HP has received reports from its Channel Partners of fraudulent toner activity and is investigating as many of these reports as possible.

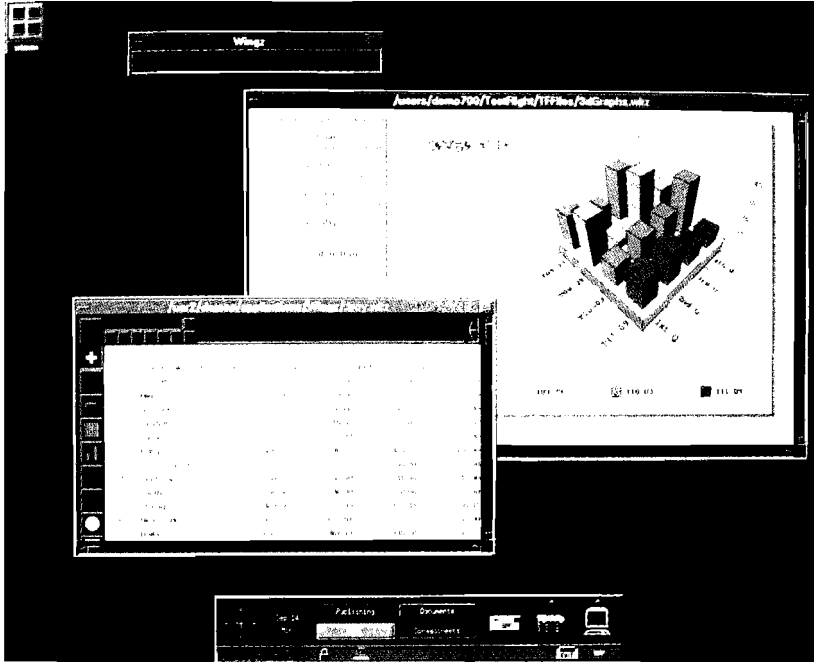
In most cases, Channel Partners are contacted by telemarketers who offer what is claimed to be a genuine HP toner. The price is below that offered by HP, and payment is required on delivery. The product is a refilled toner cartridge in an HP look-alike box. The box is bleached white with a blue stripe and purple label, but contains no HP logo. The new kraft box is also being copied.

One situation being investigated involves an exact copy of the HP box except that there is no box certificate on the bottom indicating origin and burst strength. Once the box is opened, there are other indications that the cartridge **has** been refilled.

If you have been approached with a fraudulent product, contact Toni Berria at 208-323-4819.

Terminals

New software adds local user environment to HP X stations



Effective November 1, software release B.04 is available for the HP 700/RX family of X stations. This software release supports a broad range of local clients providing industry-leading ease of use and flexibility. These local clients — processes that run locally on the Xstation to offload the host system — include HP Visual User Environment/RX (HP VUE/RX), the Xterminal industry's only complete local user environment.

Features

HP VUE/RX — HP's local user environment

HP VUE/RX allows users to easily manage multiple windows and create multiple workspaces within the Xstation, while providing the familiar look and feel of HP W E 3.0. HP VUE/RX combines the ease of use and functionality of a user environment with local client benefits, such as host RAM and MIPS offloading and reduced network traffic allowing users to add X station seats to a host configuration with no performance degradations. Because HP VUE/RX is host independent, Xstation users have access to HP VUE/RX regardless of host configuration.

HP VUE/RX also provides fast and easy access to multiple workspaces, allowing Xstation users to organize multiple windows by activity, client, or project.

HP VUE/RX shields users from the intricacies of UNIX through the use of intuitive icons, pull-down menus, and slide-up bars. It also provides a workspace control panel that permits switching between workspaces, a tool box icon for launching frequently used applications/tools, and a local client launcher for other local clients.

Frontend HP W E

For system configurations with host RAM and performance constraints, HP offers Frontend HP W E, a local user environment that offers the complete functionality of HP W E 3.0. Frontend HP W E provides system administrators with the flexibility to configure systems to their particular needs. It allows some HP W E 3.0 operations to run on the host, while running the W E window manager within the X station. Frontend HP W E provides drag-and-drop capability and a workspace control panel.

Other features

The new software includes several features that provide system administrators and users with the flexibility to optimally configure their environments.

- *Local window managers and terminal emulators* — OSF/Motif 1.2 Window Manager (mwm), Tom Window Manager (twm), Xterm, and HPterm are all offered as local clients. *All* local clients, including HP VUE/RX and Frontend HP WE, are downloadable clients that can be started and terminated at the user's request. Memory used by the local client is returned when the client is terminated.
- *Selectable/downloadable extensions* — allow system administrators to selectively download feature extensions to the Xstation's base software, which optimizes Xstation resources while satisfying end-user requirements. Three extensions **will** initially be provided: Shared Xextension; MIT Multibuffering extension; and HP Multibuffering extension.
- *X11R5 saver support* — the latest MIT X11R5 release includes the use of an optional font server and arc drawing performance enhancements.
- *Performance enhancements* — X11 performance **will** increase by over 60% for HP 700/RX Models 19Ca, 16Ca, and 19Ga. The X11perf rating for those products **will** be 2800 X11perfs. The Xstone rating **will** increase from 86,000 Xstones to 93,000 Xstones.

- *SNMP reset* — allows hard terminal restarting from remote locations, enabling system administrators to administer Xstations more quickly and easily.

Ordering information

The software release is available on November 1 with P/Ns C2715A, C2716A, C2718A, C2721A, and C2722A. These product numbers identify the HP 9000 Series 300 and 800 and HP Apollo 9000 Series 400 and 700 workstation and server software. The software release **will** be available with P/Ns C2720A and C2723A in January 1993.

Users currently on software support services for these products **will** automatically receive this software release after November 1.

**also
in this
issue**

DAT data compression support on Series 800	15
Option 800 for HP Series 6400 Model 2000DC discontinued	16
HP ScanJet IIc scanner for Series 700 workstations	18
New HP Series 6000 SCSI mass storage systems	18
New A-Series integrated peripheral tray	24
Updated ordering instructions for HP 1000 SCSI interface	24

HP Sales Offices

For more information about the products described in this issue, call your local HP representative.

United States

Alabama	
Birmingham	(205) 988-0547
Huntsville	(205) 971-2000
Alaska	
Anchorage	(907) 563-8855
Arizona	
Phoenix	(602) 273-8000
Tucson	(602) 573-7400
Arkansas	
Little Rock	(501) 225-7178
California	
Calabasas	(818) 880-3400
Fresno	(209) 252-9652
Fullerton	(714) 999-6700
Irvine	(714) 472-3000
Los Angeles	(213) 337-8000
Mt. View	(415) 694-2000
Pleasanton	(510) 460-0282
Sacramento	(916) 989-7222
San Diego	(619) 279-3200
San Francisco	(415) 882-6800
Santa Barbara	(805) 685-6100
Santa Clara	(408) 988-7000
Ventura	(805) 658-6898
Colorado	
Boulder	(303) 938-3065
Englewood	(303) 649-5000
Connecticut	
Glastonbury	(203) 633-8100
Stamford	(203) 325-5600
Florida	
Ft. Lauderdale	(305) 938-9800
Jacksonville	(904) 636-9955
Melbourne	(407) 729-0704
Orlando	(407) 859-2900
Pensacola	(904) 476-8422
Tampa	(813) 884-3282
Georgia	
Atlanta	(404) 955-1500
Norcross	(404) 448-1894
Hawaii	
Honolulu	(808) 526-1555
Idaho	
Boise	(208) 323-2700
Illinois	
Bloomington	(309) 662-9411
Chicago	(312) 930-0010
Naperville	(708) 505-8800
Roll Meadows	(708) 255-9800
Indiana	
Ft. Wayne	(219) 482-4283
Indianapolis	(317) 844-4100
Iowa	
Cedar Rapids	(319) 393-0606
Des Moines	(515) 224-1435
Kansas	
Wichita	(316) 636-4040
Kentucky	
Louisville	(502) 426-0100

Louisiana	
Baton Rouge	(504) 467-4100
New Orleans	(504) 167-4100
Maryland	
Baltimore	(301) 644-5800
Rockville	(301) 258-2000
Massachusetts	
Andover	(508) 682-1500
Burlington	(617) 270-7000
Michigan	
Grand Rapids	(616) 957-1970
Novi	(313) 349-9200
Minnesota	
St. Paul	(612) 644-1100
Mississippi	
Jackson	(601) 957-0730
Missouri	
Kansas City	(816) 737-0071
St. Louis	(314) 542-1500
Nebraska	
Omaha	(402) 493-0300
Nevada	
Las Vegas	(702) 736-2256
New Jersey	
Paramus	(201) 599-5000
Piscataway	(908) 562-6100
New Mexico	
Albuquerque	(505) 823-6100
New York	
Albany	(518) 458-1550
Buffalo	(716) 689-3003
Melville	(516) 753-0555
New York City	(212) 330-6900
Rochester	(716) 223-9950
Syracuse	(315) 451-1820
Wappinger Falls	(914) 298-9125
Woodbury	(516) 682-7800
North Carolina	
Charlotte	(704) 527-8780
Greensboro	(919) 665-1800
Raleigh	(919) 467-6600
Ohio	
Akron	(216) 666-7711
Cincinnati	(513) 891-9870
Cleveland	(216) 243-7300
Miamisburg	(513) 433-2223
Toledo	(419) 242-2200
Westerville	(614) 891-3344
Oklahoma	
Oklahoma City	(405) 946-9499
Tulsa	(918) 481-6700
Oregon	
Wilsonville	(503) 682-8000
Pennsylvania	
Harrisburg	(717) 657-5900
Pittsburgh	(412) 782-0400
Valley Forge	(215) 666-9000
South Carolina	
Columbia	(803) 732-0400
Greenville	(803) 232-8002
Tennessee	
Knoxville	(615) 966-4747
Memphis	(901) 763-4747
Nashville	(615) 255-1271

Texas	
Abilene	(915) 673-7843
Austin	(512) 346-3855
Corpus Christi	(512) 289-8271
Dallas (Love Fd.)	(214) 630-6330
Dallas	(214) 231-6101
El Paso	(915) 833-4400
Houston	(713) 776-6400
Irving	(214) 869-3377
McAllen	(512) 630-3030
San Antonio	(512) 494-9336
Utah	
Salt Lake City	(801) 974-1700
Virginia	
Falls Church	(703) 204-2100
Norfolk	(804) 424-7105
Richmond	(804) 747-7750
Roanoke	(703) 774-3444
Rosslyn	(703) 204-2100
Washington	
Bellevue	(206) 643-4000
Spokane	(509) 922-7000
West Virginia	
Charleston	(304) 925-0192
Wisconsin	
Milwaukee	(414) 792-8800
Regional Sales Headquarters	
Eastern	(301) 670-4300
Midwest	(708) 255-9800
Southern	(401) 955-1500
Neely (Western)	(818) 505-5600
Canada	
Alberta	
Calgary	(403) 262-0777
Edmonton	(403) 486-6666
British Columbia	
Richmond	(604) 270-2277
Manitoba	
Winnipeg	(304) 694-2777
New Brunswick	
Dieppe	(506) 858-9800
Nova Scotia	
Dartmouth	(902) 468-4725
Ontario	
London	(519) 646-2900
Mississauga	(416) 678-9430
Ottawa	(613) 820-6483
Quebec	
Kirkland	(514) 697-4232
Quebec City	(418) 621-1165
Saskatchewan	
Saskatoon	(306) 242-3702

Please send undelivered copies of HP Computer Update to: PO Box 51827, Palo Alto, CA 94303-0724.